

UBE2G2 Polyclonal Antibody

Catalog number: 10722-1-AP

Size: 82 µg/150 µl

Source: Rabbit

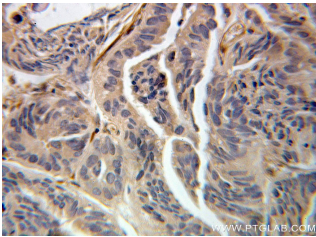
Isotype: IgG

Synonyms:

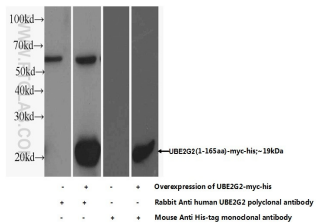
UBE2G2; UBC7, UBE2G2,

Ubiquitin carrier protein G2,

Ubiquitin protein ligase G2



Immunohistochemical of paraffin-embedded human prostate cancer using 10722-1-AP(UBE2G2 antibody) at dilution of 1:100 (under 25x lens)



Transfected HEK-293 cells were subjected to SDS PAGE followed by western blot with 10722-1-AP(UBE2G2 Antibody) at dilution of 1:1000

Applications

Tested applications:	ELISA, IHC, WB
Species specificity:	Human, Mouse, Rat; other species not tested.
Calculated UBE2G2 MW:	19 kDa
Observed UBE2G2 MW:	
Positive WB detected in	Transfected HEK-293 cells
Positive IHC detected in	Human prostate cancer tissue
Recommended dilution:	WB: 1:500-1:5000 IHC: 1:20-1:200

Application key: WB = Western blotting, IHC = Immunohistochemistry, IF = Immunofluorescence, IP = Immunoprecipitation

Immunogen information

Immunogen:	Ag1082
GenBank accession number:	BC008351
Gene ID (NCBI):	7327
Full name:	Ubiquitin-conjugating enzyme E2G 2 (UBC7 homolog, yeast)

Product information

Purification method:	Antigen affinity purification
Storage:	PBS with 0.1% sodium azide and 50% glycerol pH 7.3. Store at -20°C.