

## Spartin, SPG20 Polyclonal Antibody

Catalog number: 13791-1-AP

Size: 22 µg/150 µl

Source: Rabbit

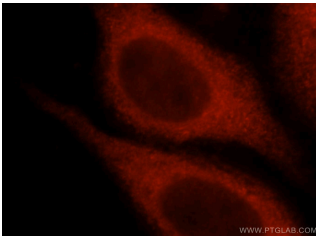
Isotype: IgG

Synonyms:

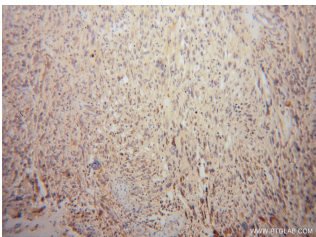
SPG20; KIAA0610, SPARTIN,

Spastic paraplegia 20 protein,

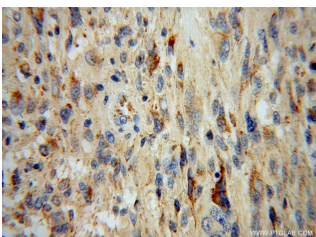
SPG20, TAHCCP1



Immunofluorescent analysis of HepG2 cells, using SPG20 antibody 13791-1-AP at 1:25 dilution and Rhodamine-labeled goat anti-rabbit IgG (red).



Immunohistochemical of paraffin-embedded human gliomas using 13791-1-AP(Spartin, SPG20 antibody) at dilution of 1:100 (under 10x lens)



Immunohistochemical of paraffin-embedded human gliomas using 13791-1-AP(Spartin, SPG20 antibody) at dilution of 1:100 (under 40x lens)

### Background

SPG20 (spastic paraplegia 20) gene encodes a multifunctional Spartin protein. SPG20 protein is highly expressed in adipose tissue and may be implicated in endosomal trafficking and microtubule dynamics. SPG20 is mutated in Troyer syndrome, a hereditary spastic paraplegia defined by degeneration of upper motor neurons, recent study showed that regulation of SPG20 on mitochondrial calcium homeostasis may contribute to the pathophysiology of Troyer syndrome. Hypermethylation of SPG20 promoter, found in colorectal cancer patients, may play a role in cytokinesis arrest in colorectal tumorigenesis.

### Applications

Tested applications:	ELISA, IHC, IF, IP, WB, FC
Cited applications:	IF, IHC, WB
Species specificity:	Human, Mouse, Rat; other species not tested.
Cited species:	Human, mouse
Calculated Spartin, SPG20 MW:	75 kDa, 85 kDa
Observed Spartin, SPG20 MW:	75 kDa, 84 kDa
Positive WB detected in	NIH/3T3 cells, HEK-293 cells, HeLa cells, human brain tissue, mouse brain tissue, rat brain tissue, SH-SY5Y cells
Positive IP detected in	Mouse brain tissue
Positive IHC detected in	Human gliomas tissue
Positive IF detected in	HepG2 cells
Positive FC detected in	HepG2 cells
Recommended dilution:	WB: 1:500-1:5000 IP: 1:500-1:5000 IHC: 1:20-1:200 IF: 1:10-1:100 FC: N/A

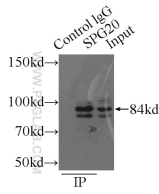
Application key: WB = Western blotting, IHC = Immunohistochemistry, IF = Immunofluorescence, IP = Immunoprecipitation

### Immunogen information

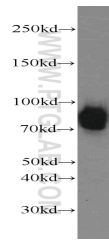
Immunogen:	Ag4815
GenBank accession number:	BC047083
Gene ID (NCBI):	23111
Full name:	Spastic paraplegia 20 (Troyer syndrome)

### Product information

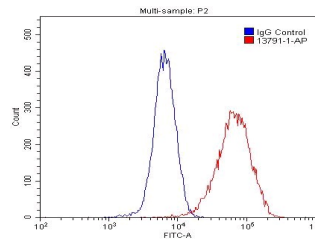
Purification method:	Antigen affinity purification
Storage:	PBS with 0.02% sodium azide and 50% glycerol pH 7.3. Store at -20°C.



**IP Result of anti-Spartin, SPG20 (IP:13791-1-AP, 3ug; Detection:13791-1-AP 1:1000) with mouse brain tissue lysate 6000ug.**



**NIH/3T3 cells were subjected to SDS PAGE followed by western blot with 13791-1-AP(Spartin, SPG20 antibody) at dilution of 1:1000**



**1X10<sup>6</sup> HepG2 cells were stained with 0.2ug Spartin, SPG20 antibody (13791-1-AP, red) and control antibody (blue). Fixed with 4% PFA blocked with 3% BSA (30 min). Alexa Fluor 488-conjugated AffiniPure Goat Anti-Rabbit IgG(H+L) with dilution 1:1500.**