

PLDN Polyclonal Antibody

Catalog number: 10891-2-AP

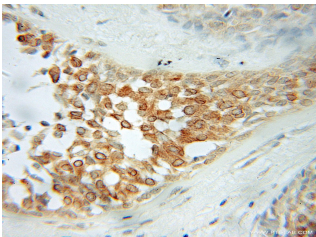
Size: 22 µg/150 µl

Source: Rabbit

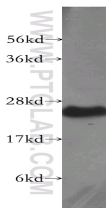
Isotype: IgG

Synonyms:

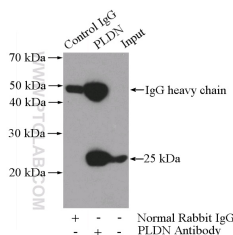
PLDN; PA, PALLID, Pallid protein homolog, Pallidin, pallidin homolog (mouse), PLDN



Immunohistochemical of paraffin-embedded human breast cancer using 10891-2-AP (PLDN antibody) at dilution of 1:50 (under 10x lens)



K-562 cells were subjected to SDS PAGE followed by western blot with 10891-2-AP (PLDN antibody) at dilution of 1:500



IP Result of anti-PLDN (IP:10891-2-AP, 3µg; Detection:10891-2-AP 1:500) with K-562 cells lysate 3600µg.

Background

Pallidin, also named as PLDN and PA, is involved in the development of lysosome-related organelles, such as melanosomes and platelet-dense granules. It may play a role in intracellular vesicle trafficking, particularly in the vesicle-docking and fusion process. Pallidin interacts with syntaxin-12 which is a t-SNARE protein that mediates vesicle docking and fusion. Pallidin is a 25 kDa subunit of the octamer BLOC-1.

Applications

Tested applications:	ELISA, WB, IHC, IP
Cited applications:	IF, WB
Species specificity:	Human, Mouse, Rat; other species not tested.
Cited species:	Human, mouse, rat
Calculated PLDN MW:	23~24 kDa
Observed PLDN MW:	25kd
Positive WB detected in	K-562 cells, HeLa cells, human brain tissue, human heart tissue, mouse thymus tissue
Positive IP detected in	K-562 cells
Positive IHC detected in	Human breast cancer tissue
Recommended dilution:	WB: 1:200-1:2000 IP: 1:200-1:2000 IHC: 1:20-1:200

Application key: WB = Western blotting, IHC = Immunohistochemistry, IF = Immunofluorescence, IP = Immunoprecipitation

Immunogen information

Immunogen:	Ag1337
GenBank accession number:	BC004819
Gene ID (NCBI):	26258
Full name:	Pallidin homolog (mouse)

Product information

Purification method:	Antigen affinity purification
Storage:	PBS with 0.1% sodium azide and 50% glycerol pH 7.3. Store at -20°C.