

SQLE Polyclonal Antibody

Catalog number: 12544-1-AP

Size: 29 µg/150 µl

Source: Rabbit

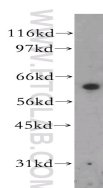
Isotype: IgG

Synonyms:

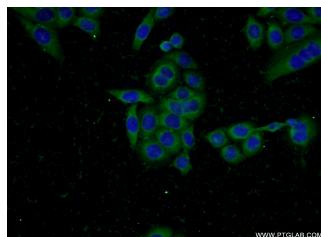
SQLE; ERG1, FLJ30795, SE,

SQLE, squalene epoxidase,

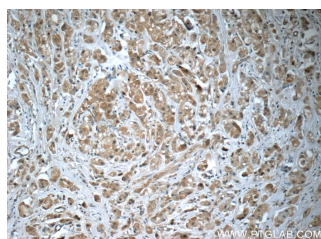
Squalene monooxygenase



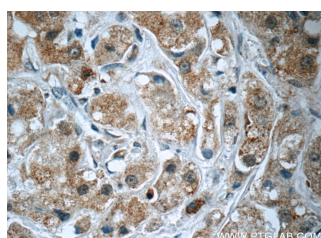
A549 cells were subjected to SDS PAGE followed by western blot with 12544-1-AP(SQLE antibody) at dilution of 1:300



Immunofluorescent analysis of PC-3 cells using 12544-1-AP(SQLE Antibody) at dilution of 1:50 and Alexa Fluor 488-conjugated AffiniPure Goat Anti-Rabbit IgG(H+L)



Immunohistochemistry of paraffin-embedded human breast cancer tissue slide using 12544-1-AP(SQLE Antibody) at dilution of 1:50 (under 10x lens)



Immunohistochemistry of

Background

SQLE, also named as ERG1, SE and SM, belongs to the squalene monooxygenase family. It catalyzes the first oxygenation step in cholesterol synthesis, acting on squalene before cyclization into the basic steroid structure. SQLE may serve as a flux-controlling enzyme beyond 3-hydroxy-3-methylglutaryl-coenzyme A reductase (HMGR, considered as rate limiting). It is also posttranslationally regulated by cholesterol-dependent proteasomal degradation.(PMID:21356516) The MW of SQLE is about 64kd.

Applications

Tested applications:

ELISA, WB, IHC, IP, IF

Cited applications:

WB

Species specificity:

Human,Mouse,Rat; other species not tested.

Cited species:

Hamster, human, mouse

Calculated SQLE MW:

574aa,64 kDa

Observed SQLE MW:

64kd

Positive WB detected in

A549 cells, HEK-293 cells

Positive IP detected in

A549 cells

Positive IHC detected in

Human breast cancer tissue, human prostate cancer tissue

Positive IF detected in

PC-3 cells

Recommended dilution:

WB: 1:200-1:2000

IP: 1:200-1:1000

IHC: 1:20-1:200

IF: 1:20-1:200

Application key: WB = Western blotting, IHC = Immunohistochemistry, IF = Immunofluorescence, IP = Immunoprecipitation

Immunogen information

Immunogen:

Ag3266

GenBank accession number:

BC017033

Gene ID (NCBI):

6713

Full name:

Squalene epoxidase

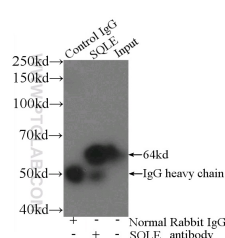
Product information

Purification method:

Antigen affinity purification

Storage:

PBS with 0.1% sodium azide and 50% glycerol pH 7.3. Store at -20°C.



IP Result of anti-SQLE

paraffin-embedded human (IP:12544-1-AP, 3ug;
breast cancer tissue slide Detection:12544-1-AP 1:300)
using 12544-1-AP(SQLE with A549 cells lysate 920ug.
Antibody) at dilution of 1:50
(under 40x lens)