

EIF3D

Monoclonal ANTIBODY

Catalog Number: 66024-1-Ig

Basic Information

Catalog Number: 66024-1-Ig	GenBank Accession Number: BC000328	Recommended Dilutions: WB 1:500-1:5000 IHC 1:20-1:200 IF 1:50-1:500
Size: 117 µg/150 µl	GeneID (NCBI): 8664	
Source: Mouse	Full Name: eukaryotic translation initiation factor 3, subunit D	
Isotype: IgG2b	Calculated MW: 66 kDa	
Purification Method: Protein A purification	Observed MW: 66 kDa	
Immunogen Catalog Number: AG18092		

Applications

Tested Applications:
ELISA, WB, IHC, IF

Species Specificity:
Human, Mouse, Rat

Positive Controls:

WB : HepG2 cells; A431 cells, HeLa cells, human brain tissue, mouse liver tissue, rat liver tissue

IHC : human brain tissue;

IF : HeLa cells;

Background Information

The mammalian translation initiation factor 3 (eIF3), is a multiprotein complex of ~600 kDa that binds to the 40 S ribosome and promotes the binding of methionyl-tRNAⁱ and mRNA. The eIF3S7(p66) is the major RNA binding subunit in this complex. Human eIF3-p66 shares 64% sequence identity with a hypothetical *Caenorhabditis elegans* protein, presumably the p66 homolog. Deletion analyses of recombinant derivatives of eIF3-p66 show that the RNA-binding domain lies within an N-terminal 71-amino acid region rich in lysine and arginine.

Notable Publications

Author	Pubmed ID	Journal	Application

Storage

Storage:
Store at -20°C. Stable for one year after shipment.

Storage Buffer:
PBS with 0.02% sodium azide and 50% glycerol pH 7.3.

Aliquoting is unnecessary for -20°C storage

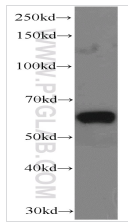
For technical support and original validation data for this product please contact:

T: 1 (888) 4PTGLAB (1-888-478-4522) (toll free in USA), or 1(312) 455-8498 (outside USA)

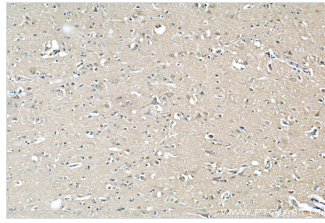
E: proteintech@ptglab.com
W: ptglab.com

This product is exclusively available under Proteintech Group brand and is not available to purchase from any other manufacturer.

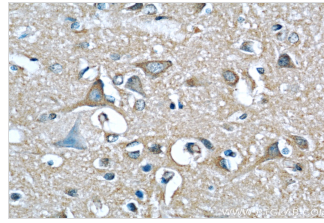
Selected Validation Data



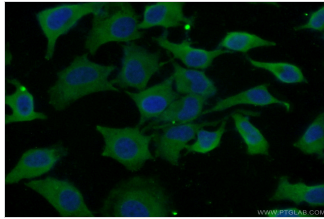
HepG2 cells were subjected to SDS PAGE followed by western blot with 66024-1-Ig(EIF3D antibody) at dilution of 1:1000



Immunohistochemical of paraffin-embedded human brain using 66024-1-Ig(EIF3D antibody) at dilution of 1:50 (under 10x lens)



Immunohistochemical of paraffin-embedded human brain using 66024-1-Ig(EIF3D antibody) at dilution of 1:50 (under 40x lens)



Immunofluorescent analysis of (10% Formaldehyde) fixed HeLa cells using 66024-1-Ig(EIF3D Antibody) at dilution of 1:50 and Alexa Fluor 488-conjugated AffiniPure Goat Anti-Mouse IgG(H+L)