

PRAP1 Polyclonal Antibody

Catalog number: 11932-1-AP

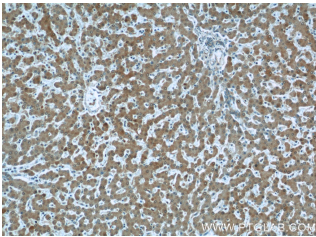
Size: 51 µg/150 µl

Source: Rabbit

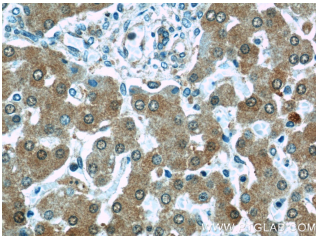
Isotype: IgG

Synonyms:

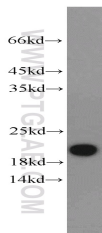
PRAP1; PRAP1, PRO1195,
proline rich acidic protein 1,
RP11 122K13.6, UPA



Immunohistochemical of paraffin-embedded human liver using 11932-1-AP (PRAP1 antibody) at dilution of 1:50 (under 10x lens)



Immunohistochemical of paraffin-embedded human liver using 11932-1-AP (PRAP1 antibody) at dilution of 1:50 (under 40x lens)



L02 cells were subjected to SDS PAGE followed by western blot with 11932-1-AP (PRAP1 antibody) at dilution of 1:1000

Background

Proline rich acidic protein 1 (PRAP1) is also named as PRO1195 or UPA. It may play an important role in maintaining normal growth homeostasis in epithelial cells. Mitotic arrest deficient 1 (MAD1) is a key component in mitotic checkpoint signalling. Recent study identified PRAP1 as a novel MAD1 binding partner using yeast-two hybrid screening (PMID: 24374861). PRAP1 has four isoforms with MW 16-20 kDa and 10 kDa.

Applications

Tested applications:	ELISA, WB, IHC
Species specificity:	Human, Mouse; other species not tested.
Calculated PRAP1 MW:	151aa, 17 kDa
Observed PRAP1 MW:	16-20 kDa
Positive WB detected in	L02 cells, mouse pancreas tissue
Positive IHC detected in	Human liver tissue, human kidney tissue, mouse small intestine tissue
Recommended dilution:	WB: 1:500-1:5000 IHC: 1:20-1:200

Application key: WB = Western blotting, IHC = Immunohistochemistry, IF = Immunofluorescence, IP = Immunoprecipitation

Immunogen information

Immunogen:	Ag2526
GenBank accession number:	BC029447
Gene ID (NCBI):	118471
Full name:	Proline-rich acidic protein 1

Product information

Purification method:	Antigen affinity purification
Storage:	PBS with 0.1% sodium azide and 50% glycerol pH 7.3. Store at -20°C.