

EXOSC10 Polyclonal Antibody

Catalog number: 11178-1-AP

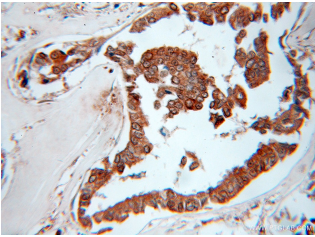
Size: 20 µg/150 µl

Source: Rabbit

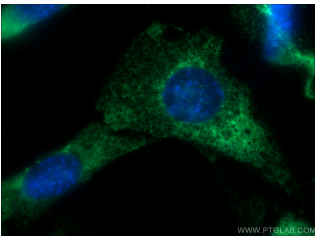
Isotype: IgG

Synonyms:

EXOSC10;



Immunohistochemical of paraffin-embedded human breast cancer using 11178-1-AP (EXOSC10 antibody) at dilution of 1:50 (under 40x lens)



Immunofluorescent analysis of NIH/3T3 cells using 11178-1-AP (EXOSC10 Antibody) at dilution of 1:50 and Alexa Fluor 488-conjugated AffiniPure Goat Anti-Rabbit IgG(H+L)

Background

About 50% of patients with polymyositis/scleroderma (PM-Scl) overlap syndrome are reported to have autoantibodies to a nuclear/nucleolar particle termed PM-Scl. Exosome component 10 (EXOSC10), also named autoantigen PM/Scl 2, is the 100 kDa antigen component of PM-Scl and is recognized by most sera of PM-Scl patients. EXOSC10 is strongly enriched in the nucleolus and a small amount has been found in cytoplasm supporting the existence of a nucleolar RNA exosome complex form. As a putative catalytic component of the RNA exosome complex which has 3'→5' exonuclease activity, EXOSC10 participates in a multitude of cellular RNA processing and degradation events.

Applications

Tested applications:	ELISA, IHC, IF
Cited applications:	WB
Species specificity:	Human; other species not tested.
Cited species:	HUMAN
Calculated EXOSC10 MW:	98 kDa
Observed EXOSC10 MW:	
Positive IHC detected in	Human breast cancer tissue
Positive IF detected in	NIH/3T3 cells
Recommended dilution:	IHC: 1:20-1:200 IF: 1:20-1:200

Application key: WB = Western blotting, IHC = Immunohistochemistry, IF = Immunofluorescence, IP = Immunoprecipitation

Immunogen information

Immunogen:	Ag1666
GenBank accession number:	BC039901
Gene ID (NCBI):	5394
Full name:	Exosome component 10

Product information

Purification method:	Antigen affinity purification
Storage:	PBS with 0.1% sodium azide and 50% glycerol pH 7.3. Store at -20°C.