

TFIIE beta Polyclonal Antibody

Catalog number: 11596-1-AP

Size: 20 µg/150 µl

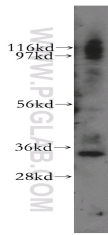
Source: Rabbit

Isotype: IgG

Synonyms:

GTF2E2; FE, GTF2E2, TF2E2,

TFIIE B, TFIIE beta



human brain tissue were subjected to SDS PAGE followed by western blot with 11596-1-AP(TFIIE beta antibody) at dilution of 1:800

Background

The general transcription factor IIE (TFIIE) is an essential component of the eukaryotic RNA polymerase II initiation complex, which plays pivotal roles in initiation of protein-coding gene transcription (PMID: 7829083). Transcription initiation factor IIE comprises two subunits, TFIIE-alpha and TFIIE-beta, two chains of which together form a tetramer. TFIIE-beta is encoded by GTF2E2 gene and contains TFIIE beta-DNA binding domain. It mainly functions to recruit TFIID to the initiation complex and stimulate RNA polymerase II kinase activity (PMID: 10792464).

Applications

Tested applications:	ELISA, WB
Cited applications:	WB
Species specificity:	Human,Mouse,Rat; other species not tested.
Cited species:	Mouse
Calculated TFIIE beta MW:	291aa,33kd
Observed TFIIE beta MW:	34kd
Positive WB detected in	Human brain tissue, A375 cells
Recommended dilution:	WB: 1:200-1:2000

Application key: WB = Western blotting, IHC = Immunohistochemistry, IF = Immunofluorescence, IP = Immunoprecipitation

Immunogen information

Immunogen:	Ag2136
GenBank accession number:	BC030572
Gene ID (NCBI):	2961
Full name:	General transcription factor IIE, polypeptide 2, beta 34kDa

Product information

Purification method:	Antigen affinity purification
Storage:	PBS with 0.1% sodium azide and 50% glycerol pH 7.3. Store at -20°C.