

## SPPL2A Polyclonal Antibody

Catalog number: 13255-1-AP

Size: 34 µg/150 µl

Source: Rabbit

Isotype: IgG

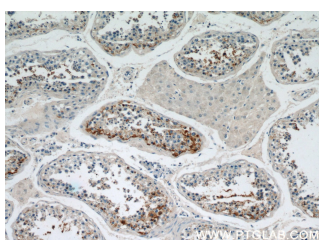
Synonyms:

SPPL2A; IMP 3, IMP3,

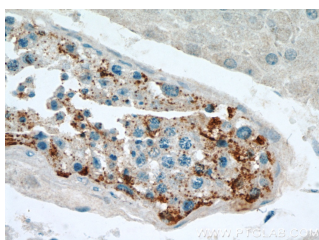
Intramembrane protease 3,

Presenilin like protein 2, PSL2,

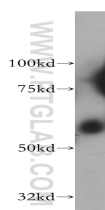
SPP like 2A, SPPL2A



Immunohistochemical of paraffin-embedded human testis using 13255-1-AP(SPPL2A antibody) at dilution of 1:50 (under 10x lens)



Immunohistochemical of paraffin-embedded human testis using 13255-1-AP(SPPL2A antibody) at dilution of 1:50 (under 40x lens)



human colon tissue were subjected to SDS PAGE followed by western blot with 13255-1-AP(SPPL2A antibody) at dilution of 1:500

### Background

SPPL2A(Signal peptide peptidase-like 2A) is also named as IMP3(Intramembrane protease 3), PSL2(Presenilin-like protein 2) and belongs to the peptidase A22B family. It is an aspartyl intramembrane protease, has been implicated in the proteolysis of TNF-alpha, Fas Ligand and Bri2 and endogenous signal-peptide-peptidase-like2A (SPPL2a) is localised in lysosomes/late endosomes(PMID:21896273). This protein has a signal peptide with 25 amino acid and seven glycosylation sites.

### Applications

Tested applications:	ELISA, WB, IHC
Species specificity:	Human,Mouse,Rat; other species not tested.
Calculated SPPL2A MW:	520aa,58kd
Observed SPPL2A MW:	58kd
Positive WB detected in	Human colon tissue, Jurkat cells, mouse colon tissue
Positive IHC detected in	Human testis tissue, human kidney tissue
Recommended dilution:	WB: 1:200-1:2000 IHC: 1:20-1:200

Application key: WB = Western blotting, IHC = Immunohistochemistry, IF = Immunofluorescence, IP = Immunoprecipitation

### Immunogen information

Immunogen:	Ag3935
GenBank accession number:	BC025740
Gene ID (NCBI):	84888
Full name:	Signal peptide peptidase-like 2A

### Product information

Purification method:	Antigen affinity purification
Storage:	PBS with 0.02% sodium azide and 50% glycerol pH 7.3. Store at -20°C.