

## EMILIN1 Polyclonal Antibody

Catalog number: 10643-1-AP

Size: 28 µg/150 µl

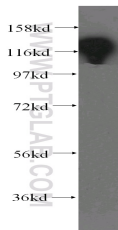
Source: Rabbit

Isotype: IgG

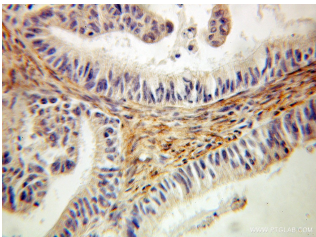
Synonyms:

EMILIN1; DKFZp586M121;

EMILIN; EMILIN-1; gp115



human kidney tissue were subjected to SDS PAGE followed by western blot with 10643-1-AP(EMILIN1 Antibody) at dilution of 1:1000



Immunohistochemistry of paraffin-embedded human ovary tumor using 10643-1-AP(EMILIN1 Antibody) at Dilution 1:100 (under 10x lens)

### Background

EMILIN1, also named as EMILIN, EMILIN-1, gp115 and EMI, may be responsible for anchoring smooth muscle cells to elastic fibers, and may be involved not only in the formation of the elastic fiber, but also in the processes that regulate vessel assembly. It has cell adhesive capacity. EMILIN1 is a negative regulator of the transforming growth factor-beta (TGF-beta) signaling, which is involved in blood pressure (BP) homeostasis. ( PMID:20186130 ) EMILIN1 may play a key role in hypertensive vascular remodeling. TGFβ proteins are the main regulators of blood vessel development and maintenance, and EMILIN1 inhibits TGFβ signaling by binding specifically to the proTGFβ precursor and preventing its maturation by furin convertases in the extracellular space.(PMID:19922630 )

### Applications

Tested applications:	ELISA, WB, IHC
Species specificity:	Human; other species not tested.
Positive WB detected in:	Human kidney tissue, human brain tissue, human placenta tissue
Calculated EMILIN1 MW:	107kd
Observed EMILIN1 MW:	120kd
Positive IHC detected in:	Human ovary tumor
Recommended dilution:	WB: 1:500-1:5000 IHC: 1:50-1:200

Application key: WB = Western blotting, IHC = Immunohistochemistry, IF = Immunofluorescence, IP = Immunoprecipitation, FC = Flow cytometry

### Immunogen information

Immunogen:	Ag1016
GenBank accession number:	BC007530
Gene ID (NCBI):	11117
Full name:	Elastin microfibril interfacier 1

### Product information

Purification method:	Antigen affinity purification
Storage:	PBS with 0.1% sodium azide and 50% glycerol pH 7.3. Store at -20°C.