

CYP2W1 Polyclonal Antibody

Catalog number: 12904-1-AP

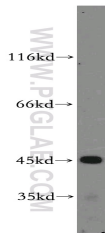
Size: 20 µg/150 µl

Source: Rabbit

Isotype: IgG

Synonyms:

CYP2W1; CYP2W1, Cytochrome
P450 2W1, CYPIIW1



HepG2 cells were subjected to SDS
PAGE followed by western blot with
12904-1-AP (CYP2W1 antibody) at
dilution of 1:400

Applications

Tested applications:	ELISA, WB
Species specificity:	Human, mouse, rat; other species not tested.
Calculated CYP2W1 MW:	54 kDa
Observed CYP2W1 MW:	45-54kd
Positive WB detected in	HepG2 cells
Recommended dilution:	WB: 1:200-1:2000

Application key: WB = Western blotting, IHC = Immunohistochemistry, IF = Immunofluorescence, IP = Immunoprecipitation

Immunogen information

Immunogen:	Ag3803
GenBank accession number:	BC025761
Gene ID (NCBI):	54905
Full name:	Cytochrome P450, family 2, subfamily W, polypeptide 1

Product information

Purification method:	Antigen affinity purification
Storage:	PBS with 0.02% sodium azide and 50% glycerol pH 7.3. Store at -20°C.