

S100A14 Polyclonal Antibody

Catalog number: 10489-1-AP

Size: 49 µg/150 µl

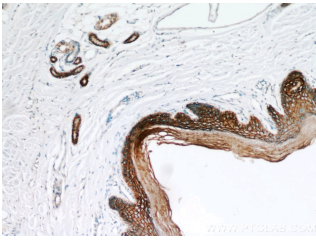
Source: Rabbit

Isotype: IgG

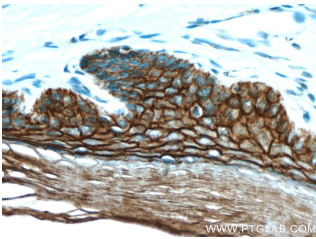
Synonyms:

S100A14; Protein S100 A14,

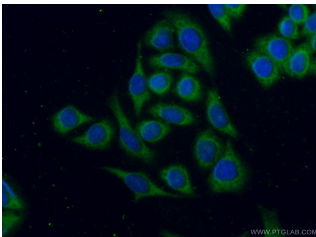
S100A14, S100A15, S114



Immunohistochemical of paraffin-embedded human skin using 10489-1-AP(S100A14 antibody) at dilution of 1:50 (under 10x lens)



Immunohistochemical of paraffin-embedded human skin using 10489-1-AP(S100A14 antibody) at dilution of 1:50 (under 40x lens)



Immunofluorescent analysis of (-20 Ethanol) fixed HeLa cells using 10489-1-AP(S100A14 Antibody) at dilution of 1:25 and Alexa Fluor 488-conjugated AffiniPure Goat Anti-Rabbit IgG(H+L)

Background

The S100 family is a multifunctional group of EF-hand type calciumbinding proteins. S100A14 protein (previously known as BCMP84, S100A15) is a recently identified member of the S100 family. It is differentially expressed in a number of different human malignancies like ovary, breast, uterus, kidney, rectum and colon cancers, and esophageal and oral squamous cell carcinomas (OSCCs).

Applications

Tested applications:	ELISA, IHC, IF
Cited applications:	IF, IHC, IP, WB
Species specificity:	Human; other species not tested.
Cited species:	Human
Calculated S100A14 MW:	11.6 kDa
Observed S100A14 MW:	
Positive IHC detected in	Human skin tissue, human colon cancer tissue, human gliomas tissue
Positive IF detected in	HeLa cells
Recommended dilution:	IHC: 1:20-1:200 IF: 1:10-1:100

Application key: WB = Western blotting, IHC = Immunohistochemistry, IF = Immunofluorescence, IP = Immunoprecipitation

Immunogen information

Immunogen:	Ag0757
GenBank accession number:	BC005019
Gene ID (NCBI):	57402
Full name:	S100 calcium binding protein A14

Product information

Purification method:	Antigen affinity purification
Storage:	PBS with 0.1% sodium azide and 50% glycerol pH 7.3. Store at -20°C.