

DDX3 Polyclonal Antibody

Catalog number: 11115-1-AP

Size: 36 µg/150 µl

Source: Rabbit

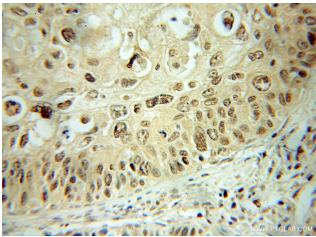
Isotype: IgG

Synonyms:

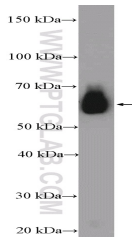
DDX3X; DBX, DDX14, DDX3,

DDX3X, DEAD box, X isoform,

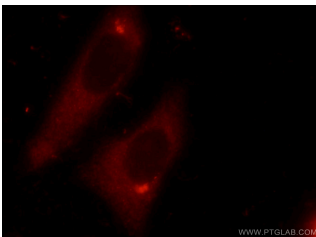
Helicase like protein 2, HLP2



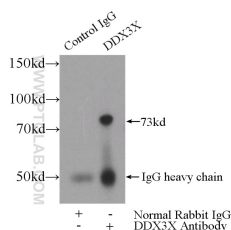
Immunohistochemical of paraffin-embedded human cervical cancer using 11115-1-AP(DDX3 antibody) at dilution of 1:50 (under 10x lens)



mouse liver tissue were subjected to SDS PAGE followed by western blot with 11115-1-AP(DDX3 Antibody) at dilution of 1:600



Immunofluorescent analysis of Ethacrynic acid treated HepG2 cells using 11115-1-AP(DDX3 Antibody) at dilution of 1:25 and Rhodamine-Goat anti-Rabbit IgG



IP Result of anti-DDX3

(IP:11115-1-AP, 4µg;

Background

DDX3X, also named as DBX, DDX3 and HLP2, belongs to the DEAD box helicase family and DDX3/DED1 subfamily. It is ATP-dependent RNA helicase. DDX3X acts as a cofactor for XPO1-mediated nuclear export of incompletely spliced HIV-1 Rev RNAs. It is also involved in HIV-1 replication. DDX3X interacts specifically with hepatitis C virus core protein resulting in a change in intracellular location. 73kd is the target band. 60-65kd is some other isoform. This antibody can bind both DDX3X and DDX3Y for the close sequences.

Applications

Tested applications:	ELISA, IHC, IF, IP, WB
Species specificity:	Human, Mouse, Rat; other species not tested.
Calculated DDX3 MW:	73 kDa
Observed DDX3 MW:	73 kDa, 60-65 kDa
Positive WB detected in	Mouse liver tissue, C6 cells, HeLa cells, HepG2 cells, HT-1080 cells, NIH/3T3 cells
Positive IP detected in	HeLa cells
Positive IHC detected in	Human cervical cancer tissue
Positive IF detected in	Ethacrynic acid treated HepG2 cells, HepG2 cells
Recommended dilution:	WB: 1:200-1:2000 IP: 1:200-1:1000 IHC: 1:20-1:200 IF: 1:10-1:100

Application key: WB = Western blotting, IHC = Immunohistochemistry, IF = Immunofluorescence, IP = Immunoprecipitation

Immunogen information

Immunogen:	Ag1614
GenBank accession number:	BC011819
Gene ID (NCBI):	1654
Full name:	DEAD (Asp-Glu-Ala-Asp) box polypeptide 3, X-linked

Product information

Purification method:	Antigen affinity purification
Storage:	PBS with 0.1% sodium azide and 50% glycerol pH 7.3. Store at -20°C.

Detection:11115-1-AP 1:300)
with HeLa cells lysate 2480ug.