

IFI30 Polyclonal Antibody

Catalog number: 11597-1-AP

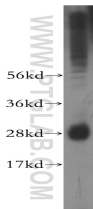
Size: 45 µg/150 µl

Source: Rabbit

Isotype: IgG

Synonyms:

IFI30; GILT, IFI 30, IFI30, IP30



human colon tissue were subjected to SDS PAGE followed by western blot with 11597-1-AP(IFI30 antibody) at dilution of 1:400

Background

IFI30(interferon, gamma-inducible protein 30) is also named as IP30, GILT, IFI-30, MGC32056, IFI30 and belongs to the GILT family. It can facilitate the processing and presentation to antigen-specific T cells of protein antigens containing disulfide bonds. IFI30 is inducibly up-regulated by IFN-g, as are MHC class II molecules, the associated invariant chain, and HLA-DM, which catalyses peptide loading in MIICs and the 35 kDa species is the IFI30 proform, and the 30-kDa species is the mature form(PMID:10639150). It can exist as a dimer(PMID:17142755).

Applications

Tested applications:	ELISA, WB
Species specificity:	Human; other species not tested.
Calculated IFI30 MW:	261aa,29 kDa
Observed IFI30 MW:	29 kDa
Positive WB detected in	Human colon tissue
Recommended dilution:	WB: 1:500-1:5000

Application key: WB = Western blotting, IHC = Immunohistochemistry, IF = Immunofluorescence, IP = Immunoprecipitation

Immunogen information

Immunogen:	Ag2178
GenBank accession number:	BC021136
Gene ID (NCBI):	10437
Full name:	Interferon, gamma-inducible protein 30

Product information

Purification method:	Antigen affinity purification
Storage:	PBS with 0.1% sodium azide and 50% glycerol pH 7.3. Store at -20°C.