

CPVL Polyclonal Antibody

Catalog number: 12548-1-AP

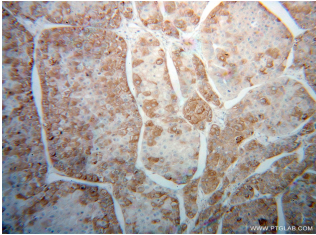
Size: 41 µg/150 µl

Source: Rabbit

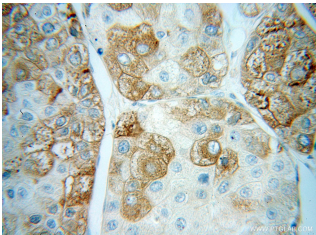
Isotype: IgG

Synonyms:

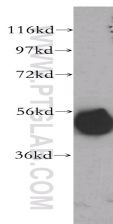
CPVL; CPVL, HVLP,
UNQ197/PRO223, VCP like
protein, VLP



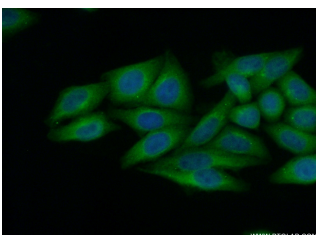
Immunohistochemical of paraffin-embedded human liver cancer using 12548-1-AP (CPVL antibody) at dilution of 1:200 (under 10x lens)



Immunohistochemical of paraffin-embedded human liver cancer using 12548-1-AP (CPVL antibody) at dilution of 1:200 (under 40x lens)



human liver tissue were subjected to SDS PAGE followed by western blot with 12548-1-AP (CPVL antibody) at dilution of 1:500



Immunofluorescent analysis
of (10% Formaldehyde) fixed

Applications

Tested applications:	ELISA, WB, IHC, IF
Species specificity:	Human, Mouse, Rat; other species not tested.
Calculated CPVL MW:	476aa, 54 kDa
Observed CPVL MW:	54 kDa
Positive WB detected in	Human liver tissue, HepG2 cells, human heart tissue, human kidney tissue
Positive IHC detected in	Human liver cancer tissue, human liver tissue
Positive IF detected in	HepG2 cells
Recommended dilution:	WB: 1:1000-1:10000 IHC: 1:20-1:200 IF: 1:50-1:500

Application key: WB = Western blotting, IHC = Immunohistochemistry, IF = Immunofluorescence, IP = Immunoprecipitation

Immunogen information

Immunogen:	Ag3398
GenBank accession number:	BC016838
Gene ID (NCBI):	54504
Full name:	Carboxypeptidase, vitellogenic-like

Product information

Purification method:	Antigen affinity purification
Storage:	PBS with 0.1% sodium azide and 50% glycerol pH 7.3. Store at -20°C.

HepG2 cells using 12548-1-
AP(CPVL Antibody) at
dilution of 1:50 and Alexa
Fluor 488-conjugated
AffiniPure Goat Anti-Rabbit
IgG(H+L)