

## MALT1 Polyclonal Antibody

Catalog number: 11660-1-AP

Size: 39 µg/150 µl

Source: Rabbit

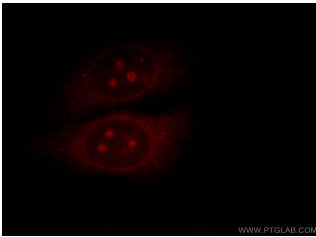
Isotype: IgG

Synonyms:

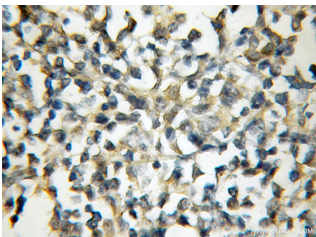
MALT1; DKFZp434L132,

MALT1, MLT, MLT1,

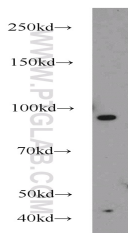
Paracaspase



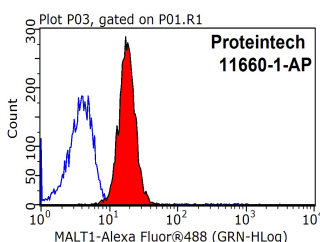
Immunofluorescent analysis of HepG2 cells, using MALT1 antibody 11660-1-AP at 1:25 dilution and Rhodamine-labeled goat anti-rabbit IgG (red).



Immunohistochemical of paraffin-embedded human lymphoma using 11660-1-AP (MALT1 antibody) at dilution of 1:50 (under 10x lens)



HeLa cells were subjected to SDS PAGE followed by western blot with 11660-1-AP (MALT1 antibody) at dilution of 1:600



1X10<sup>6</sup> HeLa cells were stained with 0.2µg MALT1

### Background

Mucosa-associated lymphoid tissue lymphoma translocation protein 1 belongs to caspase-like protein superfamily. MALT1 plays a potential role in the regulation of apoptosis and induces NFκB activation and required for the normal development of B cells and for the activation of the IKK complex. It acts as a caspase and mediates additional functions related to T cell activation, cleaving both the ubiquitin editing enzyme, TNFAIP3, and the C terminus of BCL10. It has two isoforms. Researches showed that inhibition of MALT1 blocks A20 and BCL10 cleavage, reduces NFκB activity, and decreases the expression of NFκB targets BCLXL.

### Applications

Tested applications:	ELISA, IHC, IF, WB, FC
Species specificity:	Human, Mouse, Rat; other species not tested.
Calculated MALT1 MW:	824aa, 92 kDa
Observed MALT1 MW:	90 kDa
Positive WB detected in	HeLa cells, HEK-293 cells, mouse testis tissue
Positive IHC detected in	Human lymphoma tissue
Positive IF detected in	HepG2 cells
Positive FC detected in	HeLa cells
Recommended dilution:	WB: 1:200-1:2000
	IHC: 1:20-1:200
	IF: 1:10-1:100
	FC: N/A

Application key: WB = Western blotting, IHC = Immunohistochemistry, IF = Immunofluorescence, IP = Immunoprecipitation

### Immunogen information

Immunogen:	Ag2182
GenBank accession number:	BC030143
Gene ID (NCBI):	10892
Full name:	Mucosa associated lymphoid tissue lymphoma translocation gene 1

### Product information

Purification method:	Antigen affinity purification
Storage:	PBS with 0.1% sodium azide and 50% glycerol pH 7.3. Store at -20°C.

antibody (11660-1-AP, red)  
and control antibody (blue).  
Fixed with 90% MeOH  
blocked with 3% BSA (30  
min). Alexa Fluor 488-  
conjugated AffiniPure Goat  
Anti-Rabbit IgG(H+L) with  
dilution 1:1500.