

SNAI2 Polyclonal Antibody

Catalog number: 12129-1-AP

Size: 34 µg/150 µl

Source: Rabbit

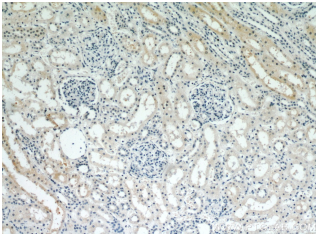
Isotype: IgG

Synonyms:

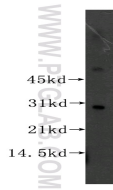
SNAI2; Protein snail homolog 2, SLUG, SLUGH, SLUGH1,

SNAI2, snail homolog 2

(Drosophila), WS2D, Zinc finger protein SNAI2



Immunohistochemical of paraffin-embedded human kidney using 12129-1-AP(SNAI2 antibody) at dilution of 1:200 (under 10x lens)



mouse pancreas tissue were subjected to SDS PAGE followed by western blot with 12129-1-AP(SNAI2 antibody) at dilution of 1:300

Background

SNAI2 belongs to the Snail family of zinc finger transcription factors, which shares an evolutionarily conserved role in mesoderm formation in vertebrates and invertebrates. It triggers epithelial-mesenchymal transitions and has a crucial role in developmental processes. Also it is a transcriptional repressor in mediating RAF-induced expression of TJ protein, occludin(OCLN) and subsequent oncogenic transformation of epithelial cells

Applications

Tested applications:	ELISA, WB, IHC
Cited applications:	WB
Species specificity:	Human, Mouse, Rat; other species not tested.
Calculated SNAI2 MW:	268aa, 30 kDa
Observed SNAI2 MW:	30 kDa
Positive WB detected in	Mouse pancreas tissue, HepG2 cells
Positive IHC detected in	Human kidney tissue
Recommended dilution:	WB: 1:200-1:1000 IHC: 1:20-1:200

Application key: WB = Western blotting, IHC = Immunohistochemistry, IF = Immunofluorescence, IP = Immunoprecipitation

Immunogen information

Immunogen:	Ag2773
GenBank accession number:	BC015895
Gene ID (NCBI):	6591
Full name:	Snail homolog 2 (Drosophila)

Product information

Purification method:	Antigen affinity purification
Storage:	PBS with 0.1% sodium azide and 50% glycerol pH 7.3. Store at -20°C.