

SF3A3 Polyclonal Antibody

Catalog number: 12070-1-AP

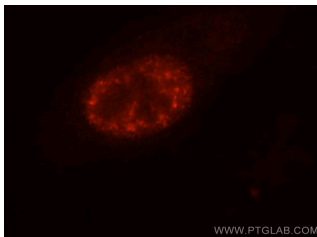
Size: 20 µg/150 µl

Source: Rabbit

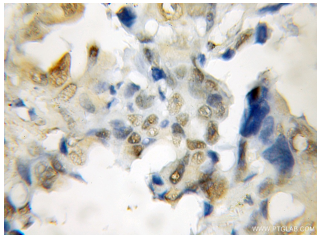
Isotype: IgG

Synonyms:

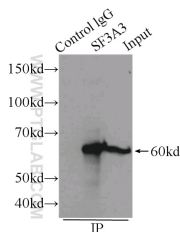
SF3A3; PRP9, PRPF9, SAP 61, SAP61, SF3A3, SF3a60, Splicing factor 3A subunit 3



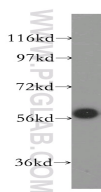
Immunofluorescent analysis of HeLa cells, using SF3A3 antibody 12070-1-AP at 1:25 dilution and Rhodamine-labeled goat anti-rabbit IgG (red).



Immunohistochemical of paraffin-embedded human lung cancer using 12070-1-AP(SF3A3 antibody) at dilution of 1:50 (under 10x lens)



IP Result of anti-SF3A3 (IP:12070-1-AP, 4µg; Detection:12070-1-AP 1:600) with Raji cells lysate 2000ug.



Raji cells were subjected to SDS PAGE followed by western blot with 12070-1-

Applications

Tested applications:	ELISA, WB, IHC, IF, IP
Species specificity:	Human, Mouse, Rat; other species not tested.
Calculated SF3A3 MW:	501aa, 59 kDa
Observed SF3A3 MW:	59kd
Positive WB detected in:	Raji cells
Positive IP detected in:	Raji cells
Positive IHC detected in:	Human lung cancer tissue
Positive IF detected in:	Hela cells
Recommended dilution:	WB: 1:200-1:2000
	IP: 1:200-1:2000
	IHC: 1:20-1:200
	IF: 1:10-1:100

Application key: WB = Western blotting, IHC = Immunohistochemistry, IF = Immunofluorescence, IP = Immunoprecipitation

Immunogen information

Immunogen:	Ag2708
GenBank accession number:	BC011523
Gene ID (NCBI):	10946
Full name:	Splicing factor 3a, subunit 3, 60kDa

Product information

Purification method:	Antigen affinity purification
Storage:	PBS with 0.1% sodium azide and 50% glycerol pH 7.3. Store at -20°C.

**AP(SF3A3 antibody) at
dilution of 1:300**