

GRO alpha Polyclonal Antibody

Catalog number: 12335-1-AP

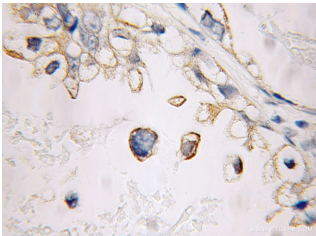
Size: 32 µg/150 µl

Source: Rabbit

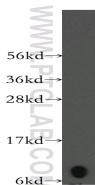
Isotype: IgG

Synonyms:

CXCL1; C X C motif chemokine 1, CXCL1, FSP, GRO, GRO alpha(1 73), GRO1, GROa, Growth regulated alpha protein, MGSA, MGSA a, NAP 3, SCYB1



Immunohistochemical of paraffin-embedded human ovary tumor using 12335-1-AP(CXCL1 antibody) at dilution of 1:100 (under 10x lens)



COLO 320 cells were subjected to SDS PAGE followed by western blot with 12335-1-AP(CXCL1 antibody) at dilution of 1:300

Background

CXCL1, also named as FSP, GRO1, GROa, MGSA, MGSA-a, NAP-3 and SCYB1, is a small cytokine belonging to the CXC chemokine family that was previously called GRO1 oncogene. It has chemotactic activity for neutrophils. CXCL1 may play a role in inflammation and exerts its effects on endothelial cells in an autocrine fashion. In vitro, the processed forms GRO-alpha(4-73), GRO-alpha(5-73) and GRO-alpha(6-73) show a 30-fold higher chemotactic activity. CXCL1 is secreted by human melanoma cells, has mitogenic properties and is implicated in melanoma pathogenesis. CXCL1 is expressed by macrophages, neutrophils and epithelial cells. CXCL1 plays a role in spinal cord development by inhibiting the migration of oligodendrocyte precursors and is involved in the processes of angiogenesis, inflammation, wound healing, and tumorigenesis. This chemokine elicits its effects by signaling through the chemokine receptor CXCR2. The gene for CXCL1 is located on human chromosome 4 amongst genes for other CXC chemokines. An initial study in mice showed evidence that CXCL1 decreased the severity of multiple sclerosis and may offer a neuro-protective function.

Applications

Tested applications:	ELISA, WB, IHC
Cited applications:	IF, IHC, WB
Species specificity:	Human, Mouse; other species not tested.
Cited species:	Human, mouse
Calculated GRO alpha MW:	8 kDa to 14 kDa
Observed GRO alpha MW:	8 kDa
Positive WB detected in	COLO 320 cells, mouse small intestine tissue
Positive IHC detected in	Human ovary tumor tissue
Recommended dilution:	WB: 1:500-1:5000 IHC: 1:20-1:200

Application key: WB = Western blotting, IHC = Immunohistochemistry, IF = Immunofluorescence, IP = Immunoprecipitation

Immunogen information

Immunogen:	Ag2917
GenBank accession number:	BC011976
Gene ID (NCBI):	2919
Full name:	Chemokine (C-X-C motif) ligand 1 (melanoma growth stimulating activity, alpha)

Product information

Purification method:	Antigen affinity purification
Storage:	PBS with 0.1% sodium azide and 50% glycerol pH 7.3. Store at -20°C.