

GFPT1 Polyclonal Antibody

Catalog number: 14132-1-AP

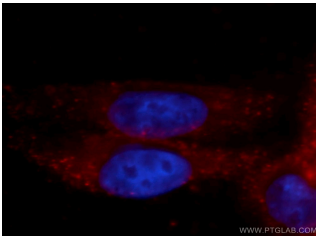
Size: 43 µg/150 µl

Source: Rabbit

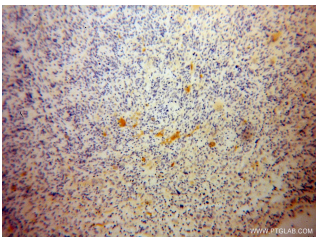
Isotype: IgG

Synonyms:

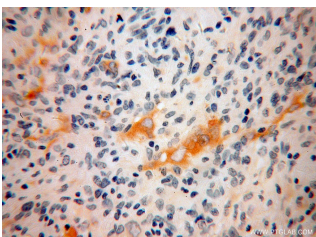
GFPT1; GFA, GFAT, GFAT 1,
GFAT1, GFAT1m, GFPT, GFPT1



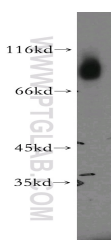
Immunofluorescent analysis of HepG2 cells, using GFPT1 antibody 14132-1-AP at 1:100 dilution and PE-labeled goat anti-rabbit IgG (red). Blue pseudocolor = DAPI (fluorescent DNA dye).



Immunohistochemical of paraffin-embedded human gliomas using 14132-1-AP (GFPT1 antibody) at dilution of 1:100 (under 10x lens)



Immunohistochemical of paraffin-embedded human gliomas using 14132-1-AP (GFPT1 antibody) at dilution of 1:100 (under 40x lens)



human skeletal muscle tissue were subjected to SDS PAGE

Background

GFPT1 (glutamine-fructose-6-phosphate transaminase 1) catalyzes the transfer of an amino group from glutamine onto fructose-6-phosphate, yielding glucosamine-6-phosphate (GlcN-6-P) and glutamate. GFPT1 is the key enzyme of the hexosamine pathway and is required for critical events in neuromuscular transmission. Mutations of GFPT1 cause congenital myasthenic syndromes (CMS). (21310273, 25765662)

Applications

Tested applications:	ELISA, IHC, IF, WB
Cited applications:	IF, WB
Species specificity:	Human, Mouse, Rat, Zebrafish; other species not tested.
Cited species:	Human
Calculated GFPT1 MW:	681aa, 77 kDa
Observed GFPT1 MW:	77kd
Positive WB detected in	Human skeletal muscle tissue, HepG2 cells
Positive IHC detected in	Human gliomas tissue, human hepatocirrhosis tissue
Positive IF detected in	HepG2 cells
Recommended dilution:	WB: 1:200-1:2000
	IHC: 1:20-1:200
	IF: 1:20-1:200

Application key: WB = Western blotting, IHC = Immunohistochemistry, IF = Immunofluorescence, IP = Immunoprecipitation

Immunogen information

Immunogen:	Ag5312
GenBank accession number:	BC045641
Gene ID (NCBI):	2673
Full name:	Glutamine-fructose-6-phosphate transaminase 1

Product information

Purification method:	Antigen affinity purification
Storage:	PBS with 0.02% sodium azide and 50% glycerol pH 7.3. Store at -20°C.

followed by western blot with
14132-1-AP(GFPT1 antibody)
at dilution of 1:500