

TMED2 Polyclonal Antibody

Catalog number: 11981-1-AP

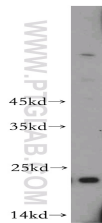
Size: 20 µg/150 µl

Source: Rabbit

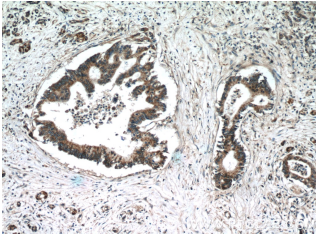
Isotype: IgG

Synonyms:

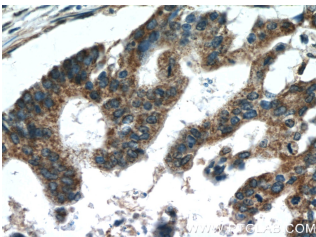
TMED2; FLJ21323, Membrane protein p24A, P24A, RNP24, TMED2



mouse pancreas tissue were subjected to SDS PAGE followed by western blot with 11981-1-AP(TMED2 antibody) at dilution of 1:500



Immunohistochemistry of paraffin-embedded human pancreas cancer tissue slide using 11981-1-AP(TMED2 Antibody) at dilution of 1:50 (under 10x lens)



Immunohistochemistry of paraffin-embedded human pancreas cancer tissue slide using 11981-1-AP(TMED2 Antibody) at dilution of 1:50 (under 40x lens)

Applications

| | |
|--------------------------|--|
| Tested applications: | ELISA, WB, IHC |
| Species specificity: | Human, Mouse; other species not tested. |
| Calculated TMED2 MW: | 201aa,23 kDa |
| Observed TMED2 MW: | 23 kDa |
| Positive WB detected in | Mouse pancreas tissue, mouse liver tissue, mouse skin tissue |
| Positive IHC detected in | Human pancreas cancer tissue |
| Recommended dilution: | WB: 1:200-1:2000 IHC: 1:20-1:200 |

Application key: WB = Western blotting, IHC = Immunohistochemistry, IF = Immunofluorescence, IP = Immunoprecipitation

Immunogen information

| | |
|---------------------------|--|
| Immunogen: | Ag2607 |
| GenBank accession number: | BC025957 |
| Gene ID (NCBI): | 10959 |
| Full name: | Transmembrane emp24 domain trafficking protein 2 |

Product information

| | |
|----------------------|---|
| Purification method: | Antigen affinity purification |
| Storage: | PBS with 0.1% sodium azide and 50% glycerol pH 7.3. Store at -20°C. |