

Connexin-32 Polyclonal Antibody

Catalog number: 10450-1-AP

Size: 20 µg/150 µl

Source: Rabbit

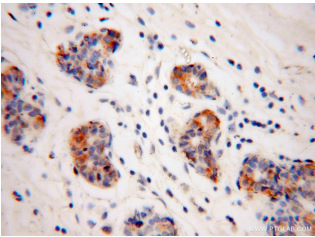
Isotype: IgG

Synonyms:

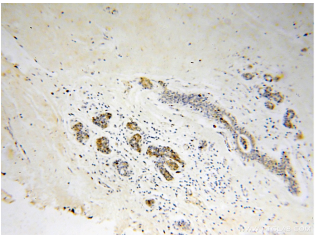
GJB1; CMTX, CMTX1,

Connexin-32, CX32, Gap

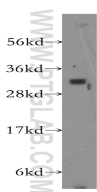
junction beta 1 protein, GJB1



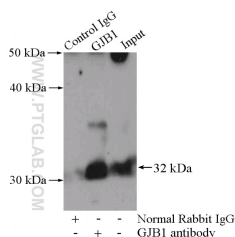
Immunohistochemical of paraffin-embedded human colon cancer using 10450-1-AP (GJB1 antibody) at dilution of 1:50 (under 40x lens)



Immunohistochemical of paraffin-embedded human colon cancer using 10450-1-AP (GJB1 antibody) at dilution of 1:50 (under 10x lens)



mouse brain tissue were subjected to SDS PAGE followed by western blot with 10450-1-AP (GJB1 antibody) at dilution of 1:300



IP Result of anti-Cx32

(IP:10450-1-AP, 4µg)

Background

Connexin-32 (Cx32), also known as Gap junction beta 1 protein (GJB1), belongs to the connexin family. Connexins are membrane-spanning proteins that assemble to form gap junction channels that facilitate the transfer of ions and small molecules between cells. Connexin-32 is the major gap junction protein of liver, and the expression is also found in brain and other organs. It is involved in tumorigenesis and liver regeneration. Connexin-32 plays an important role in peripheral nerve. Defects in Connexin-32 are the cause of Charcot-Marie-Tooth disease X-linked type 1 (CMTX1), an inherited peripheral neuropathy. (PMID: 8266101; 8613761; 8608591; 19265674)

Applications

Tested applications:	ELISA, WB, IHC, IP
Cited applications:	IF, IHC, WB
Species specificity:	Human, Mouse; other species not tested.
Cited species:	Human
Calculated Connexin-32 MW:	32 kDa
Observed Connexin-32 MW:	32 kDa
Positive WB detected in	Mouse brain tissue, A375 cells, human liver tissue, mouse skin tissue
Positive IP detected in	Mouse brain tissue
Positive IHC detected in	Human colon cancer tissue
Recommended dilution:	WB: 1:200-1:1000 IP: 1:200-1:1000 IHC: 1:20-1:200

Application key: WB = Western blotting, IHC = Immunohistochemistry, IF = Immunofluorescence, IP = Immunoprecipitation

Immunogen information

Immunogen:	Ag0659
GenBank accession number:	BC002805
Gene ID (NCBI):	2705
Full name:	Gap junction protein, beta 1, 32kDa

Product information

Purification method:	Antigen affinity purification
Storage:	PBS with 0.1% sodium azide and 50% glycerol pH 7.3. Store at -20°C.

Detection:10450-1-AP 1:300)
with mouse brain tissue lysate
4000ug.