

## PARK7, DJ-1 Polyclonal Antibody

Catalog number: 11681-1-AP

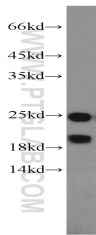
Size: 82 µg/150 µl

Source: Rabbit

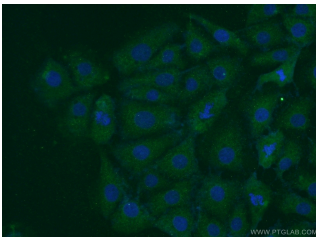
Isotype: IgG

Synonyms:

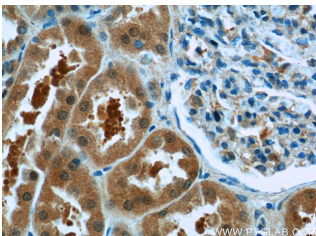
PARK7; DJ 1, DJ1, FLJ27376, FLJ34360, FLJ92274, Oncogene DJ1, PARK7, Parkinson disease protein 7, Protein DJ 1



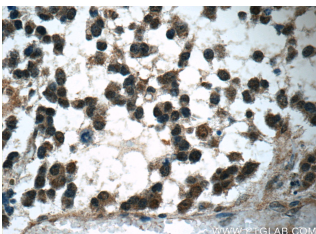
HeLa cells were subjected to SDS PAGE followed by western blot with 11681-1-AP (PARK7, DJ-1 antibody) at dilution of 1:1000



Immunofluorescent analysis of SH-SY5Y cells using 11681-1-AP (PARK7, DJ-1 Antibody) at dilution of 1:50 and Alexa Fluor 488-conjugated AffiniPure Goat Anti-Rabbit IgG (H+L)



Immunohistochemistry of paraffin-embedded human kidney tissue slide using 11681-1-AP (PARK7, DJ-1 Antibody) at dilution of 1:50 (under 40x lens)



### Background

PARK7, also named as DJ1, belongs to the peptidase C56 family. It protects cells against oxidative stress and cell death. PARK7 plays a role in regulating expression or stability of the mitochondrial uncoupling proteins SLC25A14 and SLC25A27 in dopaminergic neurons of the substantia nigra pars compacta and attenuates the oxidative stress induced by calcium entry into the neurons via L-type channels during pacemaking. It eliminates hydrogen peroxide and protects cells against hydrogen peroxide-induced cell death. PARK7 has cell-growth promoting activity and transforming activity. It may function as a redox-sensitive chaperone. It's precursor undergoes a cleavage of a C-terminal peptide and subsequent activation of protease activity in response to oxidative stress. The amino acid replace at 166 (L → P) reduces PARK7 protein stability and leads to increased degradation.

### Applications

Tested applications:	ELISA, WB, IHC, IP, IF
Cited applications:	IF, WB
Species specificity:	Human, Mouse; other species not tested.
Cited species:	Human, mouse
Calculated PARK7, DJ-1 MW:	189aa, 20 kDa
Observed PARK7, DJ-1 MW:	20 kDa, 25 kDa
Positive WB detected in	HeLa cells, HEK-293 cells, Jurkat cells
Positive IP detected in	HeLa cells
Positive IHC detected in	Human gliomas tissue, human kidney tissue
Positive IF detected in	SH-SY5Y cells
Recommended dilution:	WB: 1:500-1:5000 IP: 1:500-1:5000 IHC: 1:20-1:200 IF: 1:20-1:200

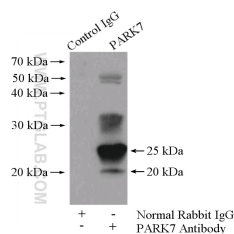
Application key: WB = Western blotting, IHC = Immunohistochemistry, IF = Immunofluorescence, IP = Immunoprecipitation

### Immunogen information

Immunogen:	Ag2287
GenBank accession number:	BC008188
Gene ID (NCBI):	11315
Full name:	Parkinson disease (autosomal recessive, early onset) 7

### Product information

Purification method:	Antigen affinity purification
Storage:	PBS with 0.1% sodium azide and 50% glycerol pH 7.3. Store at -20°C.



**Immunohistochemistry of  
paraffin-embedded human  
gliomas tissue slide using  
11681-1-AP( PARK7,DJ-1  
Antibody) at dilution of 1:50  
(under 40x lens)**

**IP Result of anti-PARK7,DJ-1  
(IP:11681-1-AP, 4ug;  
Detection:11681-1-AP 1:1000)  
with HeLa cells lysate 1200ug.**