

ZNF2 Polyclonal Antibody

Catalog number: 11282-1-AP

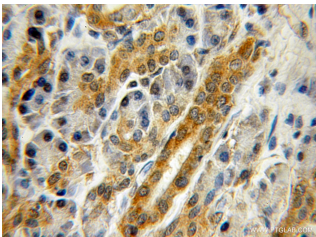
Size: 56 µg/150 µl

Source: Rabbit

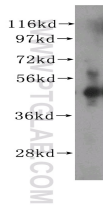
Isotype: IgG

Synonyms:

ZNF2; A1 5, Zfp661, zinc finger protein 2, Zinc finger protein 2.2, Zinc finger protein 661, ZNF2, ZNF661



Immunohistochemical of paraffin-embedded human pancreas cancer using 11282-1-AP(ZNF2 antibody) at dilution of 1:50 (under 10x lens)



human spleen tissue were subjected to SDS PAGE followed by western blot with 11282-1-AP(ZNF2 antibody) at dilution of 1:500

Applications

Tested applications:	ELISA, WB, IHC
Species specificity:	Human,Mouse,Rat; other species not tested.
Calculated ZNF2 MW:	49 kDa
Observed ZNF2 MW:	49 kDa
Positive WB detected in	Human spleen tissue, mouse spleen tissue
Positive IHC detected in	Human pancreas cancer tissue
Recommended dilution:	WB: 1:500-1:5000 IHC: 1:20-1:200

Application key: WB = Western blotting, IHC = Immunohistochemistry, IF = Immunofluorescence, IP = Immunoprecipitation

Immunogen information

Immunogen:	Ag1796
GenBank accession number:	BC009976
Gene ID (NCBI):	7549
Full name:	Zinc finger protein 2

Product information

Purification method:	Antigen affinity purification
Storage:	PBS with 0.1% sodium azide and 50% glycerol pH 7.3. Store at -20°C.