

DLX1 Polyclonal Antibody

Catalog number: 13046-1-AP

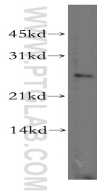
Size: 42 µg/150 µl

Source: Rabbit

Isotype: IgG

Synonyms:

DLX1;



human brain tissue were subjected to SDS PAGE followed by western blot with 13046-1-AP(DLX1 Antibody) at dilution of 1:800

Background

Distal-less homeobox 1(DLX1) is a member of the DLX family of homeobox transcription factors, which is essential for the production of forebrain GABAergic interneurons during embryonic development. The DLX family of homeobox transcription factors (Dlx1, Dlx2, Dlx5 and Dlx6) is expressed in overlapping domains at different stages of cell differentiation in the subpallium and controls differentiation of GABAergic neurons. DLX1 possible has a role in craniofacial patterning and morphogenesis and involves in the early development of diencephalic subdivisions.

Applications

Tested applications:	ELISA, WB
Species specificity:	Human, mouse, rat; other species not tested.
Positive WB detected in:	Human brain tissue, A375 cells, HeLa cells
Calculated DLX1 MW:	255aa,27kd
Observed DLX1 MW:	27kd
Recommended dilution:	WB: 1:200-1:2000

Application key: WB = Western blotting, IHC = Immunohistochemistry, IF = Immunofluorescence, IP = Immunoprecipitation, FC = Flow cytometry

Immunogen information

Immunogen:	Ag3586
GenBank accession number:	BC036189
Gene ID (NCBI):	1745
Full name:	Distal-less homeobox 1

Product information

Purification method:	Antigen affinity purification
Storage:	PBS with 0.1% sodium azide and 50% glycerol pH 7.3. Store at -20°C.