

## SDPR Polyclonal Antibody

Catalog number: 12339-1-AP

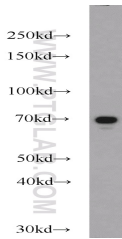
Size: 50 µg/150 µl

Source: Rabbit

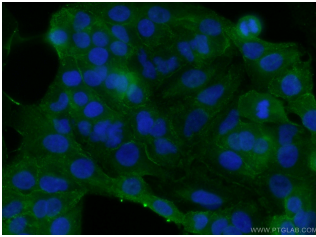
Isotype: IgG

Synonyms:

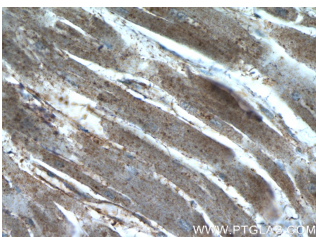
SDPR; Cavin 2, PS p68, SDPR, SDR



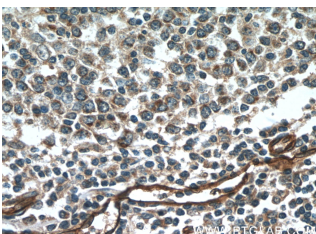
A549 cells were subjected to SDS PAGE followed by western blot with 12339-1-AP(SDPR antibody) at dilution of 1:1000



Immunofluorescent analysis of ( 10% Formaldehyde ) fixed A549 cells using 12339-1-AP( SDPR Antibody) at dilution of 1:50 and Alexa Fluor 488-conjugated AffiniPure Goat Anti-Rabbit IgG(H+L)



Immunohistochemistry of paraffin-embedded human heart tissue slide using 12339-1-AP( SDPR Antibody) at dilution of 1:50 (under 40x lens)



### Background

Serum deprivation-response protein(SDRP), a substrate of protein kinase C, is a member of a group of proteins that bind to phosphatidylserine in a calcium-dependent manner. SDPR may participate in the generation or stabilization of membrane curvature. SDPR is highly expressed in heart and lung, and low in brain,kidney, liver, pancreas, placenta and skeletal muscle. This is a rabbit polyclonal anti-SDPR antibody raised against C-terminus of human SDPR.

### Applications

<b>Tested applications:</b>	ELISA, WB, IHC, IP, IF
<b>Cited applications:</b>	IHC, WB
<b>Species specificity:</b>	Human,Mouse,Rat; other species not tested.
<b>Cited species:</b>	Human
<b>Calculated SDPR MW:</b>	425aa,47 kDa
<b>Observed SDPR MW:</b>	68-70 kDa
<b>Positive WB detected in</b>	A549 cells, COLO 320 cells, mouse brain tissue, mouse heart tissue, mouse liver tissue, mouse placenta tissue, rat brain tissue
<b>Positive IP detected in</b>	Mouse heart tissue
<b>Positive IHC detected in</b>	Human heart tissue, human breast hyperplasia tissue, human kidney tissue, human renal cell carcinoma tissue, human tonsillitis tissue
<b>Positive IF detected in</b>	A549 cells
<b>Recommended dilution:</b>	WB: 1:200-1:2000 IP: 1:500-1:5000 IHC: 1:20-1:200 IF: 1:50-1:500

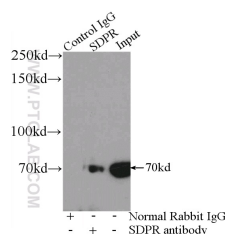
Application key: WB = Western blotting, IHC = Immunohistochemistry, IF = Immunofluorescence, IP = Immunoprecipitation

### Immunogen information

<b>Immunogen:</b>	Ag2990
<b>GenBank accession number:</b>	BC016475
<b>Gene ID (NCBI):</b>	8436
<b>Full name:</b>	Serum deprivation response (phosphatidylserine binding protein)

### Product information

<b>Purification method:</b>	Antigen affinity purification
<b>Storage:</b>	PBS with 0.02% sodium azide and 50% glycerol pH 7.3. Store at -20°C.



Immunohistochemistry of  
paraffin-embedded human  
tonsillitis tissue slide using  
12339-1-AP( SDPR Antibody)  
at dilution of 1:50 (under 40x  
lens)

IP Result of anti-SDPR  
(IP:12339-1-AP, 4ug;  
Detection:12339-1-AP 1:1000)  
with mouse heart tissue lysate  
8000ug.