

## CCNL1 Polyclonal Antibody

Catalog number: 13138-1-AP

Size: 20 µg/150 µl

Source: Rabbit

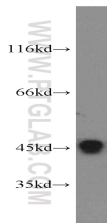
Isotype: IgG

Synonyms:

CCNL1; ania 6a, BM 001,

CCNL1, Cyclin L, cyclin L1,

PRO1073, UNQ530/PRO1073



COLO 320 cells were subjected to SDS PAGE followed by western blot with 13138-1-AP (CCNL1 antibody) at dilution of 1:400

### Background

CCNL1, also named as Cyclin-L1, contains a RS region and belongs to the cyclin family. CCNL1 localizes in the nucleus speckle and is Overexpressed in primary tumors of head and neck squamous cell carcinomas (HNSCC). CCNL1 as transcriptional regulator participates in regulating the pre-mRNA splicing process. It seems to be involved in the regulation of RNA polymerase II (pol II). CCNL1 functions in association with cyclin-dependent kinases (CDKs) and has a role in the second step of splicing. It may be a candidate proto-oncogene in head and neck squamous cell carcinomas (HNSCC). The calculated molecular weight of CCNL1 is about 55-60 kDa, but we detected a 40-50 kDa isoform by western blotting.

### Applications

Tested applications:	ELISA, WB
Species specificity:	Human, Mouse, Rat; other species not tested.
Calculated CCNL1 MW:	526aa, 60 kDa
Observed CCNL1 MW:	46 kDa
Positive WB detected in	COLO 320 cells, MCF7 cells, PC-3 cells
Recommended dilution:	WB: 1:500-1:5000

Application key: WB = Western blotting, IHC = Immunohistochemistry, IF = Immunofluorescence, IP = Immunoprecipitation

### Immunogen information

Immunogen:	Ag3731
GenBank accession number:	BC007081
Gene ID (NCBI):	57018
Full name:	Cyclin L1

### Product information

Purification method:	Antigen affinity purification
Storage:	PBS with 0.02% sodium azide and 50% glycerol pH 7.3. Store at -20°C.