

UBE2S Polyclonal Antibody

Catalog number: 14115-1-AP

Size: 20 µg/150 µl

Source: Rabbit

Isotype: IgG

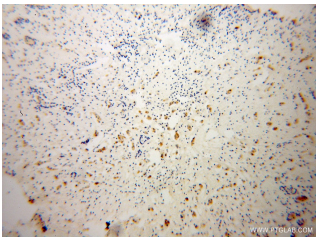
Synonyms:

UBE2S; E2 EPF, E2EPF, EPF5,

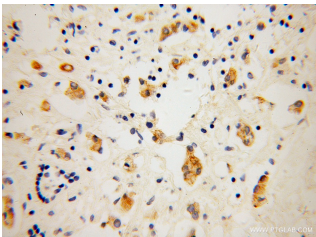
UBE2S, Ubiquitin carrier

protein S, Ubiquitin protein

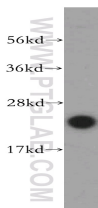
ligase S



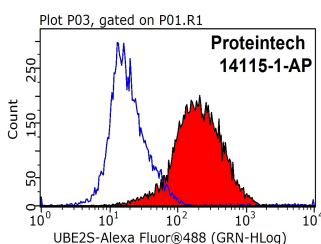
Immunohistochemical of paraffin-embedded human breast cancer using 14115-1-AP(UBE2S antibody) at dilution of 1:50 (under 10x lens)



Immunohistochemical of paraffin-embedded human breast cancer using 14115-1-AP(UBE2S antibody) at dilution of 1:50 (under 40x lens)



MDA-MB-453s cells were subjected to SDS PAGE followed by western blot with 14115-1-AP(UBE2S antibody) at dilution of 1:500



1X10⁶ Jurkat cells were

Background

UBE2S(Ubiquitin-conjugating enzyme E2 S) is also named as E2EPF and belongs to the ubiquitin-conjugating enzyme family. It acts as an essential factor of the anaphase promoting complex/cyclosome (APC/C) and a cell cycle-regulated ubiquitin ligase that controls progression through mitosis. Overexpression of UBE2S can increase tumor cell proliferation, invasion, and metastasis through the VHL-HIF pathway (PMID:16819549).

Applications

Tested applications:	ELISA, WB, IHC, FC, IP
Species specificity:	Human, Mouse, Rat; other species not tested.
Calculated UBE2S MW:	222aa, 24 kDa
Observed UBE2S MW:	28 kDa
Positive WB detected in	MDA-MB-453s cells, A2780 cells, human liver tissue, MCF7 cells, mouse liver tissue, mouse ovary tissue
Positive IP detected in	A2780 cells
Positive IHC detected in	Human breast cancer tissue, human ovary tumor tissue, human skin tissue
Positive FC detected in	Jurkat cells
Recommended dilution:	WB: 1:200-1:2000 IP: 1:500-1:5000 IHC: 1:20-1:200 FC: N/A

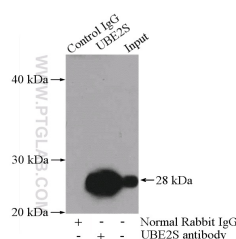
Application key: WB = Western blotting, IHC = Immunohistochemistry, IF = Immunofluorescence, IP = Immunoprecipitation

Immunogen information

Immunogen:	Ag5264
GenBank accession number:	BC066948
Gene ID (NCBI):	27338
Full name:	Ubiquitin-conjugating enzyme E2S

Product information

Purification method:	Antigen affinity purification
Storage:	PBS with 0.02% sodium azide and 50% glycerol pH 7.3. Store at -20°C.



IP Result of anti-UBE2S

stained with 0.5ug UBE2S antibody (14115-1-AP, red) and control antibody (blue). Fixed with 90% MeOH blocked with 3% BSA (30 min). Alexa Fluor 488-conjugated AffiniPure Goat Anti-Rabbit IgG(H+L) with dilution 1:1000.

(IP:14115-1-AP, 4ug; Detection:14115-1-AP 1:1000) with A2780 cells lysate 960ug.