

MPP6 Polyclonal Antibody

Catalog number: 11575-1-AP

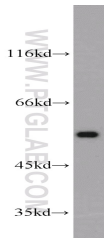
Size: 38 µg/150 µl

Source: Rabbit

Isotype: IgG

Synonyms:

MPP6; PALS2; VAM-1; VAM1;
p55T



HepG2 cells were subjected to SDS PAGE followed by western blot with 11575-1-AP(MPP6 Antibody) at dilution of 1:300

Applications

Tested applications:	ELISA, WB
Species specificity:	Human, mouse, rat; other species not tested.
Positive WB detected in:	HepG2 cells
Calculated MPP6 MW:	540aa,61kd
Observed MPP6 MW:	55-61kd
Recommended dilution:	WB: 1:200-1:1000

Application key: WB = Western blotting, IHC = Immunohistochemistry, IF = Immunofluorescence, IP = Immunoprecipitation, FC = Flow cytometry

Immunogen information

Immunogen:	Ag2158
GenBank accession number:	BC023638
Gene ID (NCBI):	51678
Full name:	Membrane protein, palmitoylated 6 (MAGUK p55 subfamily member 6)

Product information

Purification method:	Antigen affinity purification
Storage:	PBS with 0.02% sodium azide and 50% glycerol pH 7.3. Store at -20°C.