

ZFYVE16 Polyclonal Antibody

Catalog number: 13118-2-AP

Size: 23 µg/150 µl

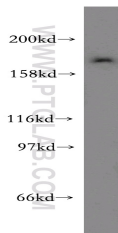
Source: Rabbit

Isotype: IgG

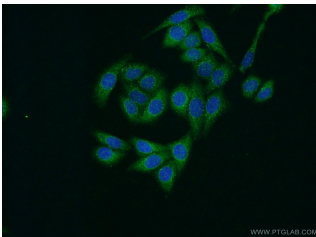
Synonyms:

ZFYVE16; DKFZp686E13162,

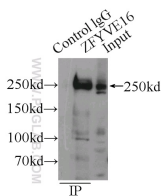
ENDOFIN, KIAA0305, ZFYVE16



MDA-MB-453s cells were subjected to SDS PAGE followed by western blot with 13118-2-AP(ZFYVE16 antibody) at dilution of 1:400



Immunofluorescent analysis of HeLa cells using 13118-2-AP(ZFYVE16 Antibody) at dilution of 1:50 and Alexa Fluor 488-conjugated AffiniPure Goat Anti-Rabbit IgG(H+L)



IP Result of anti-ZFYVE16 (IP:13118-2-AP, 5µg; Detection:13118-2-AP 1:500) with HeLa cells lysate 2000µg.

Background

Endofin (also known as ZFYVE16) is an endosomal FYVE domain protein implicated in regulating membrane trafficking. Endofin has been shown to localize to early endosomes. It co-localizes with SARA but does not associate with it or Smad2 and does not behave like SARA in affecting TGF-signaling. Northern blot analysis showed ZFYVE16 was widely expressed with high levels in kidney, placenta and lung. Overexpression of Endofin causes endosome aggregation. The gene of ZFYVE16 maps to chromosome 5q14, and encodes a 1539-amino acid protein with a molecular mass of 169 kDa. In addition, endogenous Endofin can also be detected as a band of 230-250 kDa. (PMID: 11546807)

Applications

Tested applications:	ELISA, WB, IP, IHC, IF
Cited applications:	IF, WB
Species specificity:	Human, Mouse, Rat; other species not tested.
Cited species:	Human, zebrafish
Calculated ZFYVE16 MW:	1539aa, 169 kDa
Observed ZFYVE16 MW:	169 kDa, 250 kDa
Positive WB detected in	MDA-MB-453s cells, HEK-293 cells, HeLa cells, human placenta tissue, mouse kidney tissue
Positive IP detected in	HeLa cells
Positive IHC detected in	Human kidney tissue, human heart tissue, human placenta tissue
Positive IF detected in	HeLa cells
Recommended dilution:	WB: 1:500-1:5000 IP: 1:200-1:2000 IHC: 1:20-1:200 IF: 1:20-1:200

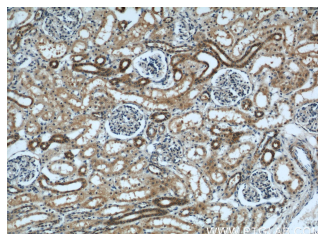
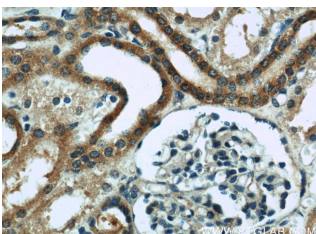
Application key: WB = Western blotting, IHC = Immunohistochemistry, IF = Immunofluorescence, IP = Immunoprecipitation

Immunogen information

Immunogen:	Ag3811
GenBank accession number:	BC032227
Gene ID (NCBI):	9765
Full name:	Zinc finger, FYVE domain containing 16

Product information

Purification method:	Antigen affinity purification
Storage:	PBS with 0.02% sodium azide and 50% glycerol pH 7.3. Store at -20°C.



**Immunohistochemical of
paraffin-embedded human
kidney using 13118-2-
AP(ZFYVE16 antibody) at
dilution of 1:200 (under 40x
lens)**

**Immunohistochemical of
paraffin-embedded human
kidney using 13118-2-
AP(ZFYVE16 antibody) at
dilution of 1:200 (under 10x
lens)**