

MCM5 Polyclonal Antibody

Catalog number: 11703-1-AP

Size: 20 µg/150 µl

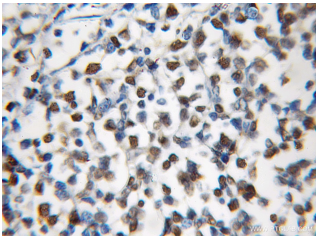
Source: Rabbit

Isotype: IgG

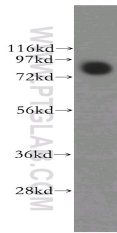
Synonyms:

MCM5; CDC46, CDC46

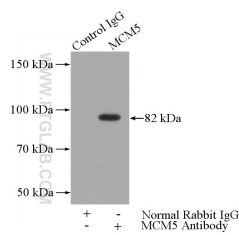
homolog, MCM5, P1 CDC46



Immunohistochemical of paraffin-embedded human lymphoma using 11703-1-AP(MCM5 antibody) at dilution of 1:100 (under 10x lens)



Jurkat cells were subjected to SDS PAGE followed by western blot with 11703-1-AP(MCM5 antibody) at dilution of 1:500



IP Result of anti-MCM5 (IP:11703-1-AP, 4µg; Detection:11703-1-AP 1:500) with Jurkat cells lysate 2400µg.

Background

Minichromosome maintenance, *S. Cerevisiae*, homolog of 5(MCM5), one component of the complex of MCM2-7, which is the putative replicative essential for once per cell cycle DNA replication initiation and elongation in eukaryotic cells. The MCM complex form a hexameric ring through the interaction surfaces of two neighboring subunits.

Applications

Tested applications:	ELISA, WB, IHC, IP
Cited applications:	IHC
Species specificity:	Human, Mouse, Rat; other species not tested.
Cited species:	Human
Calculated MCM5 MW:	82 kDa
Observed MCM5 MW:	82kd
Positive WB detected in	Jurkat cells, A375 cells, HeLa cells, mouse thymus tissue
Positive IP detected in	Jurkat cells
Positive IHC detected in	Human lymphoma tissue
Recommended dilution:	WB: 1:1000-1:10000 IP: 1:200-1:2000 IHC: 1:20-1:200

Application key: WB = Western blotting, IHC = Immunohistochemistry, IF = Immunofluorescence, IP = Immunoprecipitation

Immunogen information

Immunogen:	Ag2271
GenBank accession number:	BC000142
Gene ID (NCBI):	4174
Full name:	Minichromosome maintenance complex component 5

Product information

Purification method:	Antigen affinity purification
Storage:	PBS with 0.1% sodium azide and 50% glycerol pH 7.3. Store at -20°C.