

EBI3 Polyclonal Antibody

Catalog number: 12371-1-AP

Size: 20 µg/150 µl

Source: Rabbit

Isotype: IgG

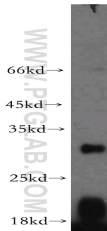
Synonyms:

EBI3; EB13, EBV induced gene 3 protein, Epstein Barr virus induced 3, IL 27 subunit beta, IL 27B, IL27B, Interleukin 27 subunit beta

Applications

Tested applications:	ELISA, WB, IP
Species specificity:	Human; other species not tested.
Calculated EBI3 MW:	229aa,25 kDa
Observed EBI3 MW:	25-35 kDa
Positive WB detected in	MCF7 cells
Positive IP detected in	MCF-7 cells
Recommended dilution:	WB: 1:200-1:2000 IP: 1:200-1:1000

Application key: WB = Western blotting, IHC = Immunohistochemistry, IF = Immunofluorescence, IP = Immunoprecipitation



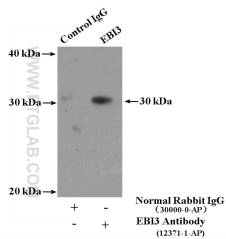
MCF7 cells were subjected to SDS PAGE followed by western blot with 12371-1-AP(EBI3 antibody) at dilution of 1:300

Immunogen information

Immunogen:	Ag3051
GenBank accession number:	BC015364
Gene ID (NCBI):	10148
Full name:	Epstein-Barr virus induced 3

Product information

Purification method:	Antigen affinity purification
Storage:	PBS with 0.02% sodium azide and 50% glycerol pH 7.3. Store at -20°C.



IP Result of anti-EBI3 (IP:12371-1-AP, 4µg; Detection:12371-1-AP 1:300) with MCF-7 cells lysate 3200µg.