

JP45/JSRP1 Polyclonal Antibody

Catalog number: 10854-1-AP

Size: 38 µg/150 µl

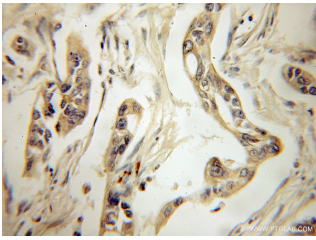
Source: Rabbit

Isotype: IgG

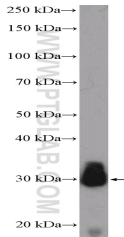
Synonyms:

JSRP1; FLJ32416, JP 45, JP45,

JP45/JSRP1, JSRP1



Immunohistochemical of paraffin-embedded human pancreas cancer using 10854-1-AP (JP45; JSRP1 antibody) at dilution of 1:50 (under 10x lens)



human skeletal muscle tissue were subjected to SDS PAGE followed by western blot with 10854-1-AP (JP45; JSRP1 Antibody) at dilution of 1:600

Background

JSRP1 (Junctional sarcoplasmic reticulum protein 1), also known as JP-45, is an integral protein of the junctional face membrane of the skeletal muscle sarcoplasmic reticulum (SR), and interacts with calsequestrin and the skeletal-muscle dihydropyridine receptor Cav1. JP-45 is an important protein for functional expression of voltage-dependent calcium channels. Involvement of JP-45 in the molecular mechanism underlying skeletal muscle excitation-contraction coupling has been reported. Although the predicated molecular weight of JP-45 is 36 kDa, it appears a 45-kDa band in western blotting in most cases.

Applications

Tested applications:	ELISA, IHC, WB
Species specificity:	Human; other species not tested.
Calculated JP45/JSRP1 MW:	36 kDa or 45 kDa
Observed JP45/JSRP1 MW:	30kd
Positive WB detected in	Human skeletal muscle tissue
Positive IHC detected in	Human pancreas cancer tissue
Recommended dilution:	WB: 1:200-1:2000 IHC: 1:20-1:200

Application key: WB = Western blotting, IHC = Immunohistochemistry, IF = Immunofluorescence, IP = Immunoprecipitation

Immunogen information

Immunogen:	Ag1300
GenBank accession number:	BC021201
Gene ID (NCBI):	126306
Full name:	Junctional sarcoplasmic reticulum protein 1

Product information

Purification method:	Antigen affinity purification
Storage:	PBS with 0.1% sodium azide and 50% glycerol pH 7.3. Store at -20°C.