

TRAPB/SSR2 Polyclonal Antibody

Catalog number: 10278-1-AP

Size: 43 µg/150 µl

Source: Rabbit

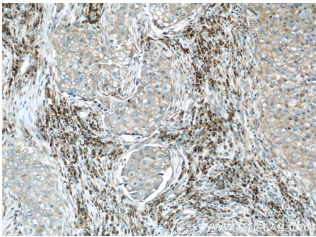
Isotype: IgG

Synonyms:

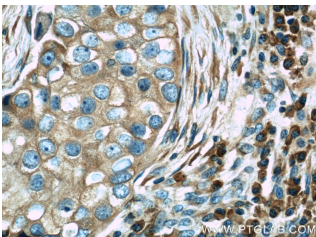
SSR2; DKFZp686F19123,

HSD25, SSR beta, SSR2, TLAP,

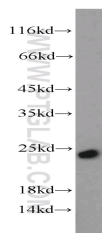
TRAP BETA, TRAPB



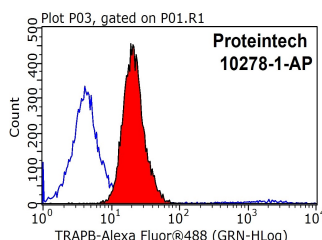
Immunohistochemical of paraffin-embedded human breast cancer using 10278-1-AP (TRAPB, SSR2 antibody) at dilution of 1:50 (under 10x lens)



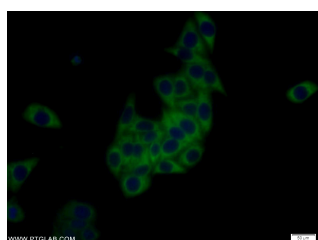
Immunohistochemical of paraffin-embedded human breast cancer using 10278-1-AP (TRAPB, SSR2 antibody) at dilution of 1:50 (under 40x lens)



HepG2 cells were subjected to SDS PAGE followed by western blot with 10278-1-AP (TRAPB, SSR2 antibody) at dilution of 1:1000



1X10⁶ MCF-7 cells were



Immunofluorescent analysis

Background

TRAPB (translocon-associated protein subunit beta), also known as SSR2 (signal sequence receptor subunit beta), is a 22-kDa single-spanning membrane glycoprotein of the endoplasmic reticulum (ER) (PMID: 7789174). It is a part of the tetrameric TRAP complex (TRAP-alpha, TRAP-beta, TRAP-delta and TRAP-gamma) which functions in regulating the retention of ER resident proteins (PMID: 7916687). The TRAP complex is also involved in endoplasmic reticulum-associated degradation (ERAD) (PMID: 17380188).

Applications

Tested applications:	ELISA, WB, IHC, FC, IF
Species specificity:	Human, Mouse, Rat; other species not tested.
Calculated TRAPB/SSR2 MW:	20 kDa
Observed TRAPB/SSR2 MW:	22-25kd
Positive WB detected in	HepG2 cells, L02 cells, mouse liver tissue
Positive IHC detected in	Human breast cancer tissue, human pancreas tissue
Positive IF detected in	HepG2 cells
Positive FC detected in	MCF-7 cells
Recommended dilution:	WB: 1:500-1:5000 IHC: 1:20-1:200 IF: 1:10-1:100 FC: N/A

Application key: WB = Western blotting, IHC = Immunohistochemistry, IF = Immunofluorescence, IP = Immunoprecipitation

Immunogen information

Immunogen:	Ag0304
GenBank accession number:	BC000341
Gene ID (NCBI):	6746
Full name:	Signal sequence receptor, beta (translocon-associated protein beta)

Product information

Purification method:	Antigen affinity purification
Storage:	PBS with 0.1% sodium azide and 50% glycerol pH 7.3. Store at -20°C.

stained with 0.2ug TRAPB, SSR2 antibody (10278-1-AP, red) and control antibody (blue). Fixed with 90% MeOH blocked with 3% BSA (30 min). Alexa Fluor 488-conjugated AffiniPure Goat Anti-Rabbit IgG(H+L) with dilution 1:1000.

of HepG2 cells using 10278-1-AP(TRAPB, SSR2 Antibody) at dilution of 1:25 and Alexa Fluor 488-conjugated AffiniPure Goat Anti-Rabbit IgG(H+L)