

SMCR7L/MID51 POLYCLONAL ANTIBODY

Catalog Number: 20164-1-AP

Featured Product

12 Publications

Basic Information

Catalog Number:
20164-1-AP

Size:
36 µg/150 µl

Source:
Rabbit

Isotype:
IgG

Purification Method:
Antigen affinity purification

Immunogen Catalog Number:
AG13775

GenBank Accession Number:
BC002587

GeneID (NCBI):
54471

Full Name:
Smith-Magenis syndrome chromosome region,
candidate 7-like

Calculated MW:
463aa, 51 kDa

Observed MW:
48-51 kDa

Recommended Dilutions:

WB : 1:500-1:5000

IP : 1:500-1:5000

IF : 1:10-1:100

Applications

Tested Applications:
ELISA, WB, IF, IP

Cited Applications:
IP, WB

Species Specificity:
Human, Mouse, Rat

Cited Species:
human, mouse

Positive Controls:

WB : HT-1080 cells; mouse heart tissue, mouse testis tissue, NIH/3T3 cells, rat liver tissue, rat testis tissue, RAW264.7 cells

IP : RAW 264.7 cells;

IF : HeLa cells;

Background Information

Human SMCR7L gene encodes, MD51, the mitochondrial dynamic protein of 51 kDa (also called mitochondrial elongation factor 1, MEF1). MD51 is a single-pass membrane protein anchored to the mitochondrial outer membrane and regulates mitochondrial morphology. Mitochondrial morphology is controlled by two opposing processes: fusion and fission. Elevated MD51 levels induce extensive mitochondrial fusion, whereas depletion of MD51 causes mitochondrial fragmentation. MD51 interacts with and recruits Drp1 to mitochondria, suggesting a critical role of MD51 in regulation of mitochondrial fusion-fission machinery in vertebrates.

Notable Publications

Author	Pubmed ID	Journal	Application
Y Ruan	24176854	Cell Death Dis	WB
Zhenzhen Zhang	26432782	FASEB J	WB
Shan Xu	26564796	Mol Biol Cell	WB

Storage

Storage:

Store at -20°C. Stable for one year after shipment.

Storage Buffer:

PBS with 0.02% sodium azide and 50% glycerol pH 7.3.

Aliquoting is unnecessary for -20°C storage

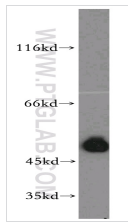
For technical support and original validation data for this product please contact:

T: 1 (888) 4PTGLAB (1-888-478-4522) (toll free in USA), or 1(312) 455-8498 (outside USA)

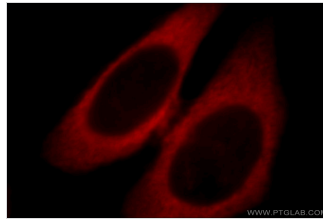
E: proteintech@ptglab.com
W: ptglab.com

This product is exclusively available under Proteintech Group brand and is not available to purchase from any other manufacturer.

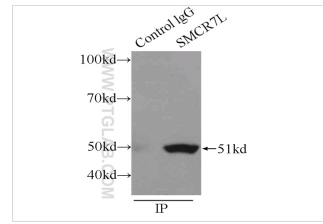
Selected Validation Data



HT-1080 cells were subjected to SDS PAGE followed by western blot with 20164-1-AP(SMCR7L antibody) at dilution of 1:400



Immunofluorescent analysis of HeLa cells, using SMCR7L antibody 20164-1-AP at 1:25 dilution and Rhodamine-labeled goat anti-rabbit IgG (red).



IP Result of anti-SMCR7L (IP:20164-1-AP, 3 μ g; Detection:20164-1-AP 1:1000) with RAW 264.7 cells lysate 2400 μ g.