

TPI1 Polyclonal Antibody

Catalog number: 10713-1-AP

Size: 32 µg/150 µl

Source: Rabbit

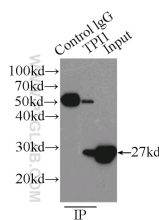
Isotype: IgG

Synonyms:

TPI1; TIM, TPI, TPI1, Triose phosphate isomerase,

Triosephosphate isomerase,

triosephosphate isomerase 1



IP Result of anti-TPI1 (IP:10713-1-AP, 3µg; Detection:10713-1-AP 1:1000) with HEK-293 cells lysate 2500µg.



HepG2 cells were subjected to SDS PAGE followed by western blot with 10713-1-AP(TPI1 antibody) at dilution of 1:2000

Background

TPI1(Triosephosphate isomerase) is also named as TIM, TPI and belongs to the triosephosphate isomerase family. It is a key enzyme in cell metabolism that controls the glycolytic flow and energy production through the interconversion of dihydroxyacetone phosphate (DHAP) and D-glyceraldehyde 3-phosphate (G3P)(PMID:19251756). Defects in TPI1 are the cause of triosephosphate isomerase deficiency (TPI deficiency). It can exist as a homodimer(PMID:18562316).

Applications

Tested applications:	ELISA, WB, IP
Cited applications:	IF, IHC, WB
Species specificity:	Human,Mouse,Rat; other species not tested.
Cited species:	Drosophila, human, mouse
Calculated TPI1 MW:	27kd
Observed TPI1 MW:	27kd
Positive WB detected in	HepG2 cells, A431 cells, HEK-293 cells
Positive IP detected in	HEK-293 cells
Recommended dilution:	WB: 1:1000-1:10000 IP: 1:500-1:5000

Application key: WB = Western blotting, IHC = Immunohistochemistry, IF = Immunofluorescence, IP = Immunoprecipitation

Immunogen information

Immunogen:	Ag1175
GenBank accession number:	BC007086
Gene ID (NCBI):	7167
Full name:	Triosephosphate isomerase 1

Product information

Purification method:	Antigen affinity purification
Storage:	PBS with 0.1% sodium azide and 50% glycerol pH 7.3. Store at -20°C.