

## Amylase, alpha Polyclonal Antibody

Catalog number: 12540-1-AP

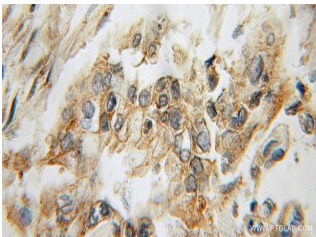
Size: 20 µg/150 µl

Source: Rabbit

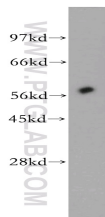
Isotype: IgG

Synonyms:

AMY2B; Alpha amylase 2B,  
AMY2, AMY2B, Amylase, alpha,  
amylase, alpha 2B (pancreatic),  
Carcinoid alpha amylase



Immunohistochemical of paraffin-embedded human pancreas cancer using 12540-1-AP (AMY2B antibody) at dilution of 1:50 (under 10x lens)



mouse skeletal muscle tissue were subjected to SDS PAGE followed by western blot with 12540-1-AP (AMY2B antibody) at dilution of 1:400

### Background

AMY2B(alpha-amylase 2B) belongs to the glycosyl hydrolase 13 family. This protein is involved in the endohydrolysis of 1,4-alpha-glucosidic linkages in oligosaccharides and polysaccharides. The full length 58 kDa protein has a signal peptide with 15 amino acids. Human amylases (Amy1, Amy2A, and Amy2B) commonly have two potential N-glycosylation sites (N427 and N476) in their C-terminal region (S Takashima, J Amano, 2012). 12540-1-AP can recognize both AMY2A and AMY2B.

### Applications

<b>Tested applications:</b>	ELISA, WB, IHC
<b>Cited applications:</b>	IHC
<b>Species specificity:</b>	Human, Mouse, Rat; other species not tested.
<b>Cited species:</b>	Mouse
<b>Calculated Amylase, alpha MW:</b>	511aa, 58 kDa
<b>Observed Amylase, alpha MW:</b>	58 kDa
<b>Positive WB detected in</b>	Mouse skeletal muscle tissue
<b>Positive IHC detected in</b>	Human pancreas cancer tissue
<b>Recommended dilution:</b>	WB: 1:200-1:2000 IHC: 1:20-1:200

Application key: WB = Western blotting, IHC = Immunohistochemistry, IF = Immunofluorescence, IP = Immunoprecipitation

### Immunogen information

<b>Immunogen:</b>	Ag3260
<b>GenBank accession number:</b>	BC011179
<b>Gene ID (NCBI):</b>	280
<b>Full name:</b>	Amylase, alpha 2B (pancreatic)

### Product information

<b>Purification method:</b>	Antigen affinity purification
<b>Storage:</b>	PBS with 0.1% sodium azide and 50% glycerol pH 7.3. Store at -20°C.