

KCNV1 Polyclonal Antibody

Catalog number: 12684-1-AP

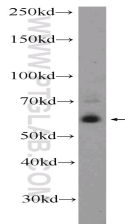
Size: 20 µg/150 µl

Source: Rabbit

Isotype: IgG

Synonyms:

KCNV1; HNKA, KCNB3, KCNV1,
KV2.3, KV8.1



SH-SY5Y cells were subjected to SDS PAGE followed by western blot with 12684-1-AP(KCNV1 Antibody) at dilution of 1:300

Applications

Tested applications:	ELISA, WB
Species specificity:	Human,Mouse,Rat; other species not tested.
Calculated KCNV1 MW:	500aa,56kd
Observed KCNV1 MW:	56 kDa
Positive WB detected in	SH-SY5Y cells
Recommended dilution:	WB: 1:150 - 1:600

Application key: WB = Western blotting, IHC = Immunohistochemistry, IF = Immunofluorescence, IP = Immunoprecipitation

Immunogen information

Immunogen:	Ag3376
GenBank accession number:	BC028739
Gene ID (NCBI):	27012
Full name:	Potassium channel, subfamily V, member 1

Product information

Purification method:	Antigen affinity purification
Storage:	PBS with 0.1% sodium azide and 50% glycerol pH 7.3. Store at -20°C.