

## APPL2 Polyclonal Antibody

Catalog number: 14294-1-AP

Size: 40 µg/150 µl

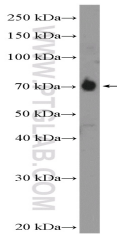
Source: Rabbit

Isotype: IgG

Synonyms:

APPL2; APPL2, Dip13 beta,

DIP13B, FLJ10659



BxPC-3 cells were subjected to SDS PAGE followed by western blot with 14294-1-AP( APPL2 Antibody) at dilution of 1:600

### Applications

Tested applications:	ELISA, WB
Species specificity:	Human,Mouse,Rat; other species not tested.
Calculated APPL2 MW:	74 kDa
Observed APPL2 MW:	74 kDa
Positive WB detected in	BxPC-3 cells
Recommended dilution:	WB: 1:200-1:2000

Application key: WB = Western blotting, IHC = Immunohistochemistry, IF = Immunofluorescence, IP = Immunoprecipitation

### Immunogen information

Immunogen:	Ag5626
GenBank accession number:	BC033731
Gene ID (NCBI):	55198
Full name:	Adaptor protein, phosphotyrosine interaction, PH domain and leucine zipper containing 2

### Product information

Purification method:	Antigen affinity purification
Storage:	PBS with 0.1% sodium azide and 50% glycerol pH 7.3. Store at -20°C.