

## IPO11 Polyclonal Antibody

Catalog number: 14403-1-AP

Size: 43 µg/150 µl

Source: Rabbit

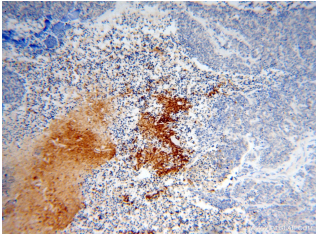
Isotype: IgG

Synonyms:

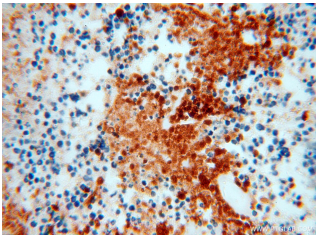
IPO11; Imp11, importin 11,

IPO11, Ran binding protein 11,

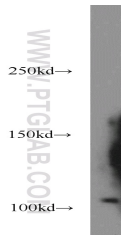
RanBP11



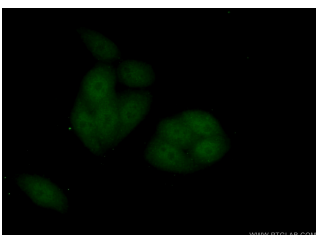
Immunohistochemical of paraffin-embedded human lung cancer using 14403-1-AP(IPO11 antibody) at dilution of 1:100 (under 10x lens)



Immunohistochemical of paraffin-embedded human lung cancer using 14403-1-AP(IPO11 antibody) at dilution of 1:100 (under 40x lens)



human testis tissue were subjected to SDS PAGE followed by western blot with 14403-1-AP(IPO11 antibody) at dilution of 1:1000



Immunofluorescent analysis of ( 10% Formaldehyde ) fixed

### Background

Importins are members of a family of transport receptors (karyopherins) that mediate the nucleocytoplasmic transport of protein and RNA cargoes. Importin-11, is a nuclear import receptor for the ubiquitin-conjugating enzyme, UbcM2.

### Applications

<b>Tested applications:</b>	ELISA, WB, IHC, IP, IF
<b>Species specificity:</b>	Human, Mouse, Rat; other species not tested.
<b>Calculated IPO11 MW:</b>	113 kDa
<b>Observed IPO11 MW:</b>	112 kDa
<b>Positive WB detected in</b>	Human testis tissue
<b>Positive IP detected in</b>	Mouse testis tissue
<b>Positive IHC detected in</b>	Human lung cancer tissue
<b>Positive IF detected in</b>	HeLa cells
<b>Recommended dilution:</b>	WB: 1:500-1:5000
	IP: 1:200-1:2000
	IHC: 1:20-1:200
	IF: 1:50-1:500

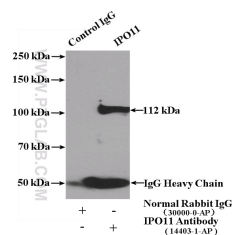
Application key: WB = Western blotting, IHC = Immunohistochemistry, IF = Immunofluorescence, IP = Immunoprecipitation

### Immunogen information

<b>Immunogen:</b>	Ag5659
<b>GenBank accession number:</b>	BC033776
<b>Gene ID (NCBI):</b>	51194
<b>Full name:</b>	Importin 11

### Product information

<b>Purification method:</b>	Antigen affinity purification
<b>Storage:</b>	PBS with 0.02% sodium azide and 50% glycerol pH 7.3. Store at -20°C.



IP Result of anti-IPO11 (IP:14403-1-AP, 4ug;

HeLa cells using 14403-1-AP (IPO11 Antibody) at dilution of 1:50 and Alexa Fluor 488-conjugated AffiniPure Goat Anti-Rabbit IgG(H+L) Detection:14403-1-AP 1:500 with mouse testis tissue lysate 4000ug.