

PNPLA6 Polyclonal Antibody

Catalog number: 14261-1-AP

Size: 47 µg/150 µl

Source: Rabbit

Isotype: IgG

Synonyms:

PNPLA6; Neuropathy target esterase, NTE, NTEMND, PNPLA6, SPG39, sws

Background

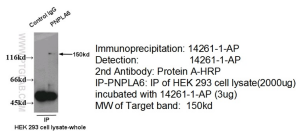
PNPLA6(patatin-like phospholipase domain-containing protein 6) is also named as NTE(neuropathy target esterase) and belongs to the NTE family. It plays an important role in motor neuron development and implicated overexpression of BMP signaling(PMID:22996643). Defects in PNPLA6 are the cause of spastic paraplegia autosomal recessive type 39 (SPG39)(PMID:18313024). This protein has a glycosylation site that it can be glycosylated(PMID:9576844). It has 3 isoforms produced by alternative splicing.

Applications

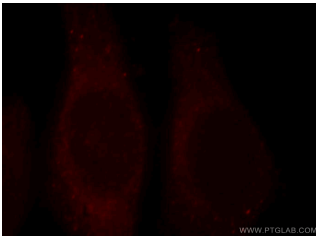
Tested applications:	ELISA, WB, IF, IP
Cited applications:	WB
Species specificity:	Human, Mouse, Rat; other species not tested.
Cited species:	Human
Calculated PNPLA6 MW:	150 kDa
Observed PNPLA6 MW:	150kd
Positive WB detected in	Mouse brain tissue, HEK-293 cells, SH-SY5Y cells
Positive IP detected in	N/A
Positive IF detected in	HepG2 cells, MCF-7 cells
Recommended dilution:	WB: 1:500-1:5000 IP: N/A IF: 1:10-1:100

Application key: WB = Western blotting, IHC = Immunohistochemistry, IF = Immunofluorescence, IP = Immunoprecipitation

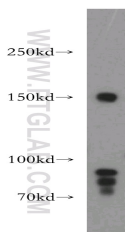
IP of 14261-1-AP with HEK 293 Cell



IP result of anti-PNPLA6 (14261-1-AP for IP and Detection) with 293 cell.



Immunofluorescent analysis of HepG2 cells, using PNPLA6 antibody 14261-1-AP at 1:25 dilution and Rhodamine-labeled goat anti-rabbit IgG (red).



mouse brain tissue were subjected to SDS PAGE followed by western blot with 14261-1-AP(PNPLA6 antibody) at dilution of 1:500

Immunogen information

Immunogen:	Ag5546
GenBank accession number:	BC051768
Gene ID (NCBI):	10908
Full name:	Patatin-like phospholipase domain containing 6

Product information

Purification method:	Antigen affinity purification
Storage:	PBS with 0.02% sodium azide and 50% glycerol pH 7.3. Store at -20°C.