

## RAB1A Polyclonal Antibody

Catalog number: 11671-1-AP

Size: 53 µg/150 µl

Source: Rabbit

Isotype: IgG

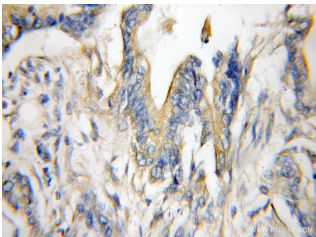
Synonyms:

RAB1A; DKFZp564B163, RAB1,

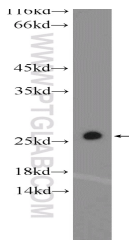
RAB1A, Ras related protein

Rab 1A, YPT1, YPT1 related

protein



Immunohistochemical of paraffin-embedded human pancreas cancer using 11671-1-AP(RAB1A antibody) at dilution of 1:50 (under 10x lens)



mouse brain tissue were subjected to SDS PAGE followed by western blot with 11671-1-AP( RAB1A Antibody) at dilution of 1:1000

### Background

Rab1A is a member of the Rab family of small GTPases with a well characterized function in the regulation of vesicle trafficking from the endoplasmic reticulum to the Golgi apparatus and within Golgi compartments. Rab1A has recently been reported an mTORC1 activator and a colorectal oncogene (Janice D. Thomas. et al. 2014. Cancer cell).

### Applications

Tested applications:	ELISA, IHC, WB
Cited applications:	IP, WB
Species specificity:	Human, Mouse, Rat; other species not tested.
Cited species:	Human, mouse
Calculated RAB1A MW:	205aa, 23 kDa
Observed RAB1A MW:	23 kDa
Positive WB detected in	Mouse brain tissue, human brain tissue, NIH/3T3 cells, rat brain tissue
Positive IHC detected in	Human pancreas cancer tissue, human liver tissue
Recommended dilution:	WB: 1:500-1:5000 IHC: 1:20-1:200

Application key: WB = Western blotting, IHC = Immunohistochemistry, IF = Immunofluorescence, IP = Immunoprecipitation

### Immunogen information

Immunogen:	Ag2264
GenBank accession number:	BC000905
Gene ID (NCBI):	5861
Full name:	RAB1A, member RAS oncogene family

### Product information

Purification method:	Antigen affinity purification
Storage:	PBS with 0.1% sodium azide and 50% glycerol pH 7.3. Store at -20°C.