

## ILK Polyclonal Antibody

Catalog number: 12955-1-AP

Size: 25 µg/150 µl

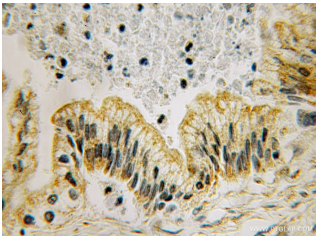
Source: Rabbit

Isotype: IgG

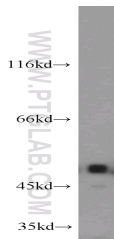
Synonyms:

ILK; DKFZp686F1765, ILK, ILK 1,

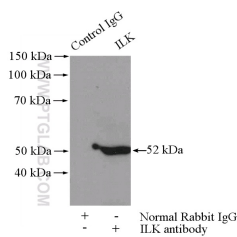
ILK 2, ILK1, ILK2, P59, p59ILK



Immunohistochemical of paraffin-embedded human pancreas cancer using 12955-1-AP (ILK antibody) at dilution of 1:100 (under 10x lens)



mouse heart tissue were subjected to SDS PAGE followed by western blot with 12955-1-AP (ILK antibody) at dilution of 1:1000



IP Result of anti-ILK (IP:12955-1-AP, 4ug; Detection:12955-1-AP 1:800) with mouse kidney tissue lysate 4000ug.

### Background

Integrin-linked kinase (ILK) is an ankyrin-repeat containing serine-threonine protein kinase capable of interacting with the cytoplasmic domains of integrin  $\beta 1$ ,  $\beta 2$ , and  $\beta 3$  subunits and whose kinase activity is modulated by cell-extracellular matrix interactions (PMID: 9539744). This protein belongs to the protein kinase superfamily. It can be autophosphorylated on serine residues.

### Applications

Tested applications:	ELISA, IHC, WB, IP
Species specificity:	Human, Mouse, Rat, Zebrafish; other species not tested.
Calculated ILK MW:	451aa, 59 kDa
Observed ILK MW:	51-59 kDa
Positive WB detected in	Mouse heart tissue, human heart tissue, mouse brain tissue, mouse kidney tissue, mouse spleen tissue
Positive IP detected in	Mouse kidney tissue
Positive IHC detected in	Human pancreas cancer tissue
Recommended dilution:	WB: 1:500-1:5000 IP: 1:200-1:2000 IHC: 1:20-1:200

Application key: WB = Western blotting, IHC = Immunohistochemistry, IF = Immunofluorescence, IP = Immunoprecipitation

### Immunogen information

Immunogen:	Ag3570
GenBank accession number:	BC001554
Gene ID (NCBI):	3611
Full name:	Integrin-linked kinase

### Product information

Purification method:	Antigen affinity purification
Storage:	PBS with 0.1% sodium azide and 50% glycerol pH 7.3. Store at -20°C.