

PP2A Polyclonal Antibody

Catalog number: 10321-1-AP

Size: 38 µg/150 µl

Source: Rabbit

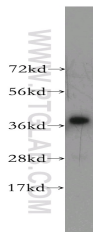
Isotype: IgG

Synonyms:

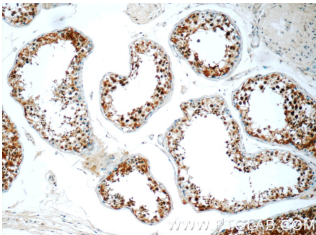
PPP2R4; PP2A, PP2A, subunit

B, PR53 isoform, PPP2R4,

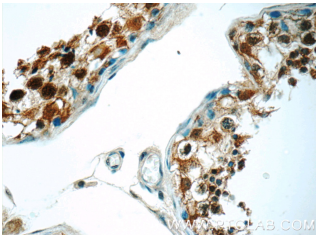
PR53, PTPA



HEK-293 cells were subjected to SDS PAGE followed by western blot with 10321-1-AP (PP2A antibody) at dilution of 1:500



Immunohistochemistry of paraffin-embedded human testis tissue slide using 10321-1-AP (PP2A Antibody) at dilution of 1:50 (under 10x lens)



Immunohistochemistry of paraffin-embedded human testis tissue slide using 10321-1-AP (PP2A Antibody) at dilution of 1:50 (under 40x lens)

Applications

Tested applications:	ELISA, WB, IHC
Species specificity:	Human, Mouse, Rat; other species not tested.
Cited species:	Human
Calculated PP2A MW:	37 kDa
Observed PP2A MW:	37 kDa
Positive WB detected in:	HEK-293 cells, Jurkat cells, K-562 cells
Positive IHC detected in:	Human testis tissue, human stomach tissue
Recommended dilution:	WB: 1:200-1:2000 IHC: 1:20-1:200

Application key: WB = Western blotting, IHC = Immunohistochemistry, IF = Immunofluorescence, IP = Immunoprecipitation

Immunogen information

Immunogen:	Ag0392
GenBank accession number:	BC002545
Gene ID (NCBI):	5524
Full name:	Protein phosphatase 2A activator, regulatory subunit 4

Product information

Purification method:	Antigen affinity purification
Storage:	PBS with 0.1% sodium azide and 50% glycerol pH 7.3. Store at -20°C.