

ENTPD2 Polyclonal Antibody

Catalog number: 13656-1-AP

Size: 22 µg/150 µl

Source: Rabbit

Isotype: IgG

Synonyms:

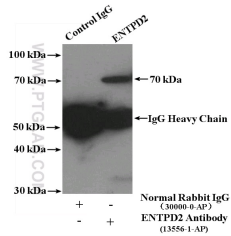
ENTPD2; CD39 antigen like 1,

CD39L1, Ecto ATP

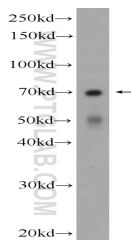
diphosphohydrolase 2, Ecto

ATPase 2, Ecto ATPDase 2,

ENTPD2, NTPDase 2



IP Result of anti-ENTPD2 (IP:13656-1-AP, 4µg; Detection:13656-1-AP 1:300) with K-562 cells lysate 4000µg.



K-562 cells were subjected to SDS PAGE followed by western blot with 13656-1-AP(ENTPD2 Antibody) at dilution of 1:600

Background

ENTPD2(Ectonucleoside triphosphate diphosphohydrolase 2) is also named as CD39L1, Ecto-ATPase 2 and belongs to the GDA1/CD39 NTPase family. In the nervous system, it could hydrolyze ATP and other nucleotides to regulate purinergic neurotransmission. This protein has 3 isoforms produced by alternative splicing.

Applications

Tested applications:	ELISA, WB, IP
Species specificity:	Human,Mouse,Rat; other species not tested.
Calculated ENTPD2 MW:	495aa,54 kDa
Observed ENTPD2 MW:	70 kDa
Positive WB detected in	K-562 cells, human placenta tissue
Positive IP detected in	K-562 cells
Recommended dilution:	WB: 1:200-1:2000 IP: 1:200-1:1000

Application key: WB = Western blotting, IHC = Immunohistochemistry, IF = Immunofluorescence, IP = Immunoprecipitation

Immunogen information

Immunogen:	Ag4513
GenBank accession number:	BC035738
Gene ID (NCBI):	954
Full name:	Ectonucleoside triphosphate diphosphohydrolase 2

Product information

Purification method:	Antigen affinity purification
Storage:	PBS with 0.1% sodium azide and 50% glycerol pH 7.3. Store at -20°C.