

TCF12/HEB Polyclonal Antibody

Catalog number: 14419-1-AP

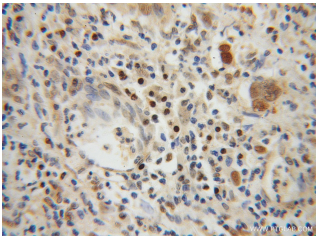
Size: 27 µg/150 µl

Source: Rabbit

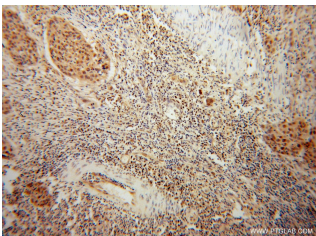
Isotype: IgG

Synonyms:

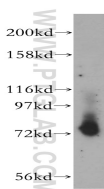
TCF12; bHLHb20, DNA binding protein HTF4, E box binding protein, HEB, HsT17266, HTF4, TCF 12, TCF12, transcription factor 12, Transcription factor HTF 4



Immunohistochemical of paraffin-embedded human cervical cancer using 14419-1-AP (TCF12 antibody) at dilution of 1:50 (under 40x lens)



Immunohistochemical of paraffin-embedded human cervical cancer using 14419-1-AP (TCF12 antibody) at dilution of 1:50 (under 10x lens)



mouse lung tissue were subjected to SDS PAGE followed by western blot with 14419-1-AP (TCF12 antibody) at dilution of 1:300

Background

The product of TCF12 gene (TCF12, also called HTF4 or HEB) is a member of helix-loop-helix (HLH) protein family [PMID:22130667]. TCF12 is a transcriptional regulator that involved in the initiation of neuronal differentiation. It 's also known as E proteins, and activates transcription by binding to the E box (5'-CANNTG-3'), because of their direct DNA (E-box) binding ability [PMID: 19204326]. TCF12 was shown to suppress E-cadherin expression during the early stages of renal tubular epithelial cell dedifferentiation [PMID:17202424].

Applications

Tested applications:	ELISA, WB, IHC
Cited applications:	IHC, WB
Species specificity:	Human, Mouse, Rat; other species not tested.
Cited species:	Human
Calculated TCF12/HEB MW:	73kd
Observed TCF12/HEB MW:	73kd
Positive WB detected in	Mouse lung tissue, Raji cells
Positive IHC detected in	Human cervical cancer tissue
Recommended dilution:	WB: 1:200-1:1000 IHC: 1:20-1:200

Application key: WB = Western blotting, IHC = Immunohistochemistry, IF = Immunofluorescence, IP = Immunoprecipitation

Immunogen information

Immunogen:	Ag5765
GenBank accession number:	BC050556
Gene ID (NCBI):	6938
Full name:	Transcription factor 12

Product information

Purification method:	Antigen affinity purification
Storage:	PBS with 0.02% sodium azide and 50% glycerol pH 7.3. Store at -20°C.