

## BBS8 Polyclonal Antibody

Catalog number: 12505-1-AP

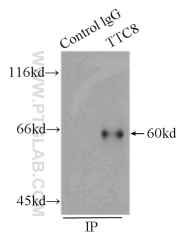
Size: 53 µg/150 µl

Source: Rabbit

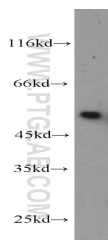
Isotype: IgG

Synonyms:

TTC8; BBS8, TPR repeat protein 8, TTC8



IP Result of anti-TTC8 (IP:12505-1-AP, 3µg; Detection:12505-1-AP 1:400) with HeLa cells lysate 2000µg.



mouse testis tissue were subjected to SDS PAGE followed by western blot with 12505-1-AP(TTC8 antibody) at dilution of 1:300

### Background

BBS8 (also known as TTC8) is a subunit of BBSome complex which is necessary for ciliary membrane biogenesis. BBS8 localizes specifically to ciliated structures, such as the connecting cilium of the retina and columnar epithelial cells in the lung. Defects in BBS8 cause Bardet-Biedl syndrome type 8 (BBS8), an genetic disorder characterised by retinal degeneration, obesity, polydactyly, cognitive impairment and kidney failure. BBS8 generates two alternatively spliced isoforms. Western blot analysis using this antibody detected a major band around 60 kD in lung tissue.

### Applications

Tested applications:	ELISA, WB, IP
Species specificity:	Human,Mouse,Rat; other species not tested.
Calculated BBS8 MW:	531aa,60 kDa
Observed BBS8 MW:	50-52 kDa
Positive WB detected in	Mouse testis tissue, human lung tissue, NIH/3T3 cells
Positive IP detected in	HeLa cells
Recommended dilution:	WB: 1:200-1:1000 IP: 1:200-1:1000

Application key: WB = Western blotting, IHC = Immunohistochemistry, IF = Immunofluorescence, IP = Immunoprecipitation

### Immunogen information

Immunogen:	Ag3186
GenBank accession number:	BC026351
Gene ID (NCBI):	123016
Full name:	Tetratricopeptide repeat domain 8

### Product information

Purification method:	Antigen affinity purification
Storage:	PBS with 0.1% sodium azide and 50% glycerol pH 7.3. Store at -20°C.