

ATP1B3 Polyclonal Antibody

Catalog number: 11142-1-AP

Size: 20 µg/150 µl

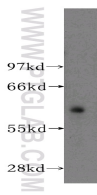
Source: Rabbit

Isotype: IgG

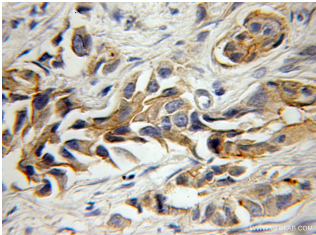
Synonyms:

ATP1B3; ATPB-3; CD298;

FLJ29027



human lung tissue were subjected to SDS PAGE followed by western blot with 11142-1-AP(ATP1B3 Antibody) at dilution of 1:300



Immunohistochemistry of paraffin-embedded human prostate cancer using 11142-1-AP(ATP1B3 Antibody) at Dilution 1:50 (under 10x lens)

Applications

Tested applications:	ELISA, WB, IHC
Species specificity:	Human; other species not tested.
Positive WB detected in:	Human lung tissue
Calculated ATP1B3 MW:	32kd
Observed ATP1B3 MW:	60-64 kDa
Positive IHC detected in:	Human prostate cancer
Recommended dilution:	WB: 1:200-1:1000 IHC: 1:20-1:200

Application key: WB = Western blotting, IHC = Immunohistochemistry, IF = Immunofluorescence, IP = Immunoprecipitation, FC = Flow cytometry

Immunogen information

Immunogen:	Ag1589
GenBank accession number:	BC011835
Gene ID (NCBI):	483
Full name:	ATPase, Na ⁺ /K ⁺ transporting, beta 3 polypeptide

Product information

Purification method:	Antigen affinity purification
Storage:	PBS with 0.1% sodium azide and 50% glycerol pH 7.3. Store at -20°C.