

beta Tubulin Polyclonal Antibody

Catalog number: 10094-1-AP

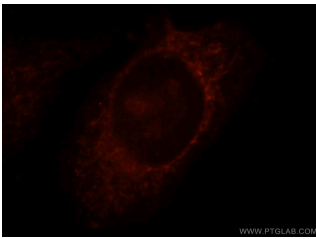
Size: 39 µg/150 µl

Source: Rabbit

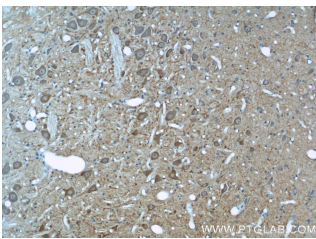
Isotype: IgG

Synonyms:

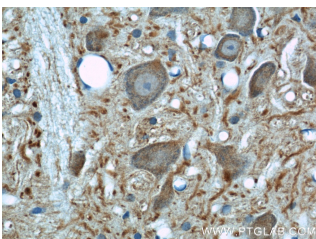
TUBB3; beta tubulin, TUBB



Immunofluorescent analysis of HepG2 cells, using 10094-1-AP and Rhodamine-labeled goat anti-rabbit IgG (red).



Immunohistochemical of paraffin-embedded rat brain using 10094-1-AP(tubulin-beta antibody) at dilution of 1:50 (under 10x lens)



Immunohistochemical of paraffin-embedded rat brain using 10094-1-AP(tubulin-beta antibody) at dilution of 1:50 (under 40x lens)

Background

There are five tubulins in human cells: alpha, beta, gamma, delta, and epsilon. Tubulins are conserved across species. They form heterodimers, which multimerize to form a microtubule filament. An alpha and beta tubulin heterodimer is the basic structural unit of microtubules. The heterodimer does not come apart, once formed. The alpha and beta tubulins, which are each about 55 kDa MW, are homologous but not identical. Alpha, beta, and gamma tubulins have all been used as loading controls. Tubulin expression may vary according to resistance to antimicrobial and antimetabolic drugs.

Applications

Tested applications:	ELISA, WB, IF, IP, IHC, FC
Cited applications:	WB
Species specificity:	Human, Mouse, Rat; other species not tested.
Cited species:	Human, mouse, rat
Calculated beta Tubulin MW:	50 kDa
Observed beta Tubulin MW:	55 kDa
Positive WB detected in	HeLa cells, A549 cells, HEK-293 cells, HepG2 cells, mouse brain tissue, PC-3 cells, rat brain tissue, SH-SY5Y cells
Positive IP detected in	Mouse brain tissue
Positive IHC detected in	Rat brain tissue, human cerebellum tissue, human colon tissue, rat testis tissue
Positive IF detected in	HepG2 cells
Positive FC detected in	HepG2 cells
Recommended dilution:	WB: 1:500-1:5000 IP: 1:500-1:5000 IHC: 1:20-1:200 IF: 1:10-1:100 FC: N/A

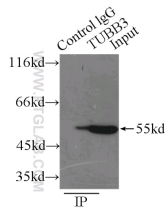
Application key: WB = Western blotting, IHC = Immunohistochemistry, IF = Immunofluorescence, IP = Immunoprecipitation

Immunogen information

Immunogen:	Ag0136
GenBank accession number:	BC000748
Gene ID (NCBI):	10381
Full name:	Tubulin, beta 3

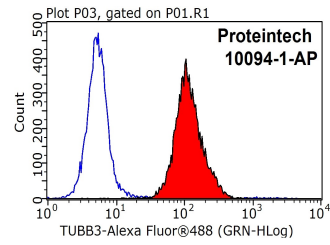
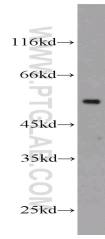
Product information

Purification method:	Antigen affinity purification
Storage:	PBS with 0.1% sodium azide and 50% glycerol pH 7.3. Store at -20°C.



IP Result of anti-tubulin-beta (IP:10094-1-AP, 3ug; Detection:10094-1-AP 1:1000) with mouse brain tissue lysate 7500ug.

HeLa cells were subjected to SDS PAGE followed by western blot with 10094-1-AP(tubulin-beta antibody) at dilution of 1:1000



1X10⁶ HepG2 cells were stained with 0.2ug tubulin-beta antibody (10094-1-AP, red) and control antibody (blue). Fixed with 90% MeOH blocked with 3% BSA (30 min). Alexa Fluor 488-conjugated AffiniPure Goat Anti-Rabbit IgG(H+L) with dilution 1:1000.