

NSMCE2 Polyclonal Antibody

Catalog number: 13627-1-AP

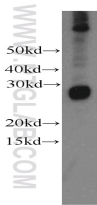
Size: 20 µg/150 µl

Source: Rabbit

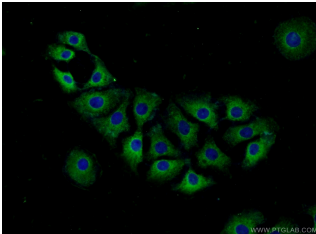
Isotype: IgG

Synonyms:

NSMCE2; C8orf36, E3 SUMO
protein ligase NSE2, FLJ32440,
hMMS21, MMS21, MMS21
homolog, Non SMC element 2
homolog, NSE2, NSMCE2



HeLa cells were subjected to SDS
PAGE followed by western blot with
13627-1-AP(NSMCE2 antibody) at
dilution of 1:500



Immunofluorescent analysis of (-20
Ethanol) fixed SH-SY5Y cells using
13627-1-AP(NSMCE2 Antibody) at
dilution of 1:50 and Alexa Fluor 488-
conjugated AffiniPure Goat Anti-
Rabbit IgG(H+L)

Applications

| | |
|-------------------------|--|
| Tested applications: | ELISA, WB, IF |
| Species specificity: | Human, Mouse, Rat; other species not tested. |
| Calculated NSMCE2 MW: | 247aa, 28 kDa |
| Observed NSMCE2 MW: | 28 kDa |
| Positive WB detected in | HeLa cells, human brain tissue, human spleen tissue, Jurkat cells, mouse spleen tissue, SH-SY5Y cells |
| Positive IF detected in | SH-SY5Y cells |
| Recommended dilution: | WB: 1:500-1:5000 IF: 1:20-1:200 |

Application key: WB = Western blotting, IHC = Immunohistochemistry, IF = Immunofluorescence, IP = Immunoprecipitation

Immunogen information

| | |
|---------------------------|---|
| Immunogen: | Ag4545 |
| GenBank accession number: | BC032797 |
| Gene ID (NCBI): | 286053 |
| Full name: | Non-SMC element 2, MMS21 homolog (<i>S. cerevisiae</i>) |

Product information

| | |
|----------------------|---|
| Purification method: | Antigen affinity purification |
| Storage: | PBS with 0.02% sodium azide and 50% glycerol pH 7.3. Store at -20°C. |